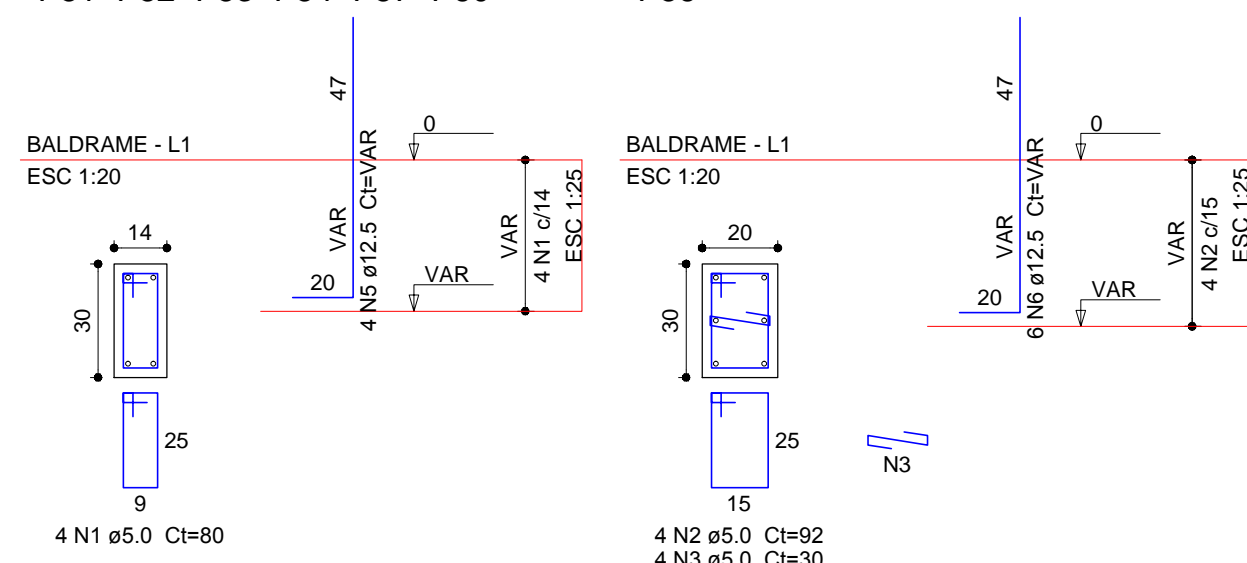


P36=P37=P38=P42=P47=P48=P55=  
=P56



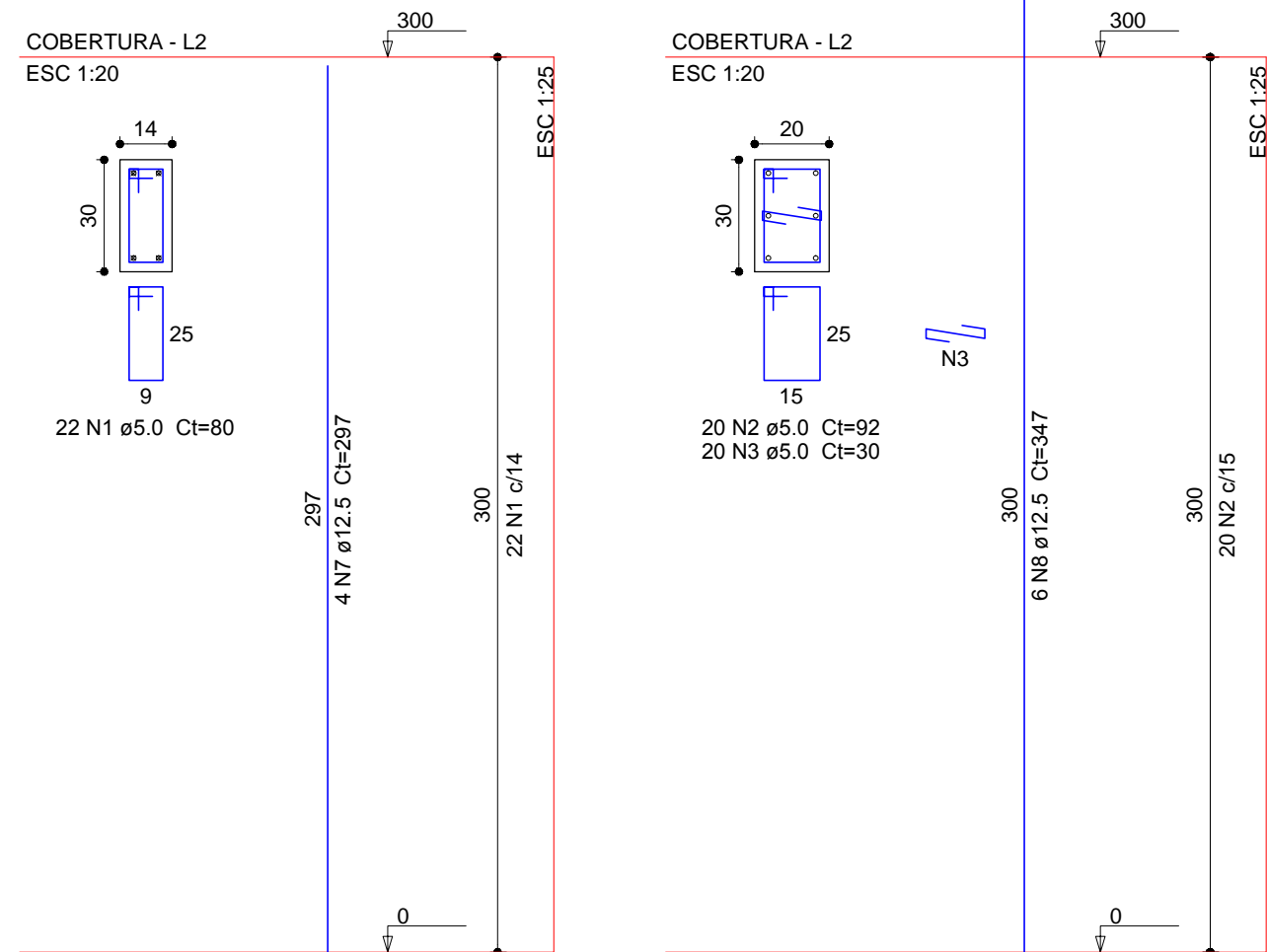
Baldrame:	50xP1	8xP36
Cintamento reserv:	4xP36	
Cobertura:	46xP1	4xP36
	4xP37	6xP53
Intermediária reserv:	4xP36	
Torre banheiro:	4xP36	6xP53
	2xP61	

AÇO	N	DIAM (mm)	QUANT	C.UNIT (cm)	C.TOTAL (cm)
CA60	1	5,0	1440	80	115200
	2	5,0	356	92	32752
	3	5,0	356	30	10680
CA50	4	5,0	30	72	2160
	5	12,5	200	VAR	VAR
	6	12,5	48	VAR	VAR
	7	12,5	184	297	54648
	8	12,5	48	347	16656
	9	12,5	24	362	8688
	10	12,5	24	262	6288
	11	12,5	32	212	6784
	12	12,5	24	142	3408
	13	12,5	24	202	4848

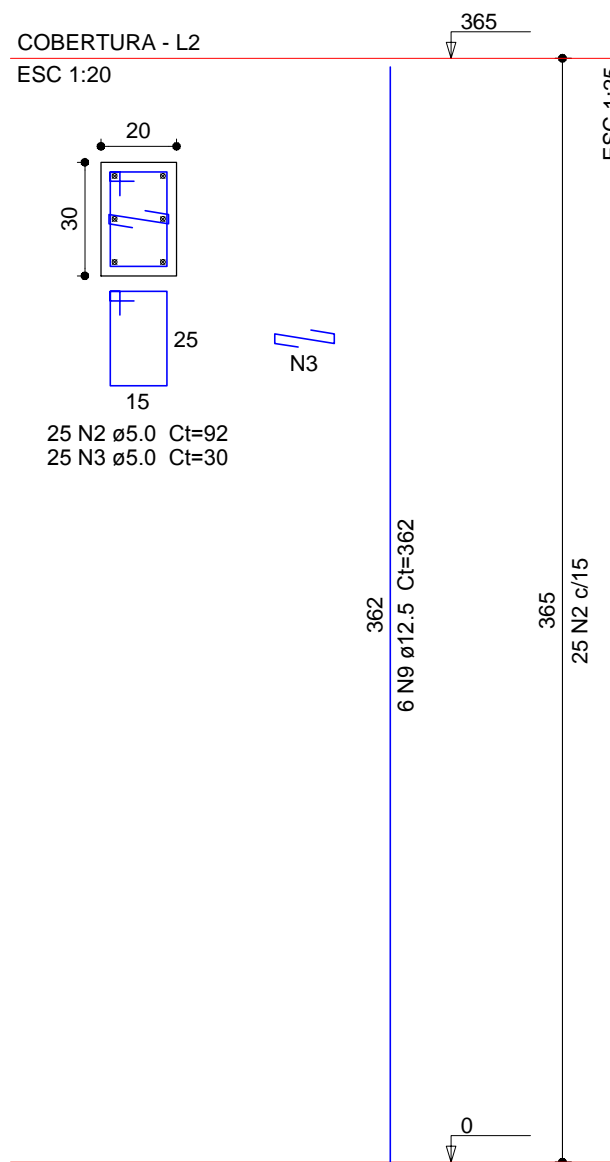
AÇO	DIAM (mm)	C.TOTAL (m)	PESO + 10 % (kg)
CA50	12.5	1288.4	1365.3
CA60	5.0	1608	272.6
PESO TOTAL (kg)			
CA50	1365.3		
CA60	272.6		

Volume de concreto (C-25) = 9,94 m<sup>3</sup>  
Área de forma = 196,67 m<sup>2</sup>

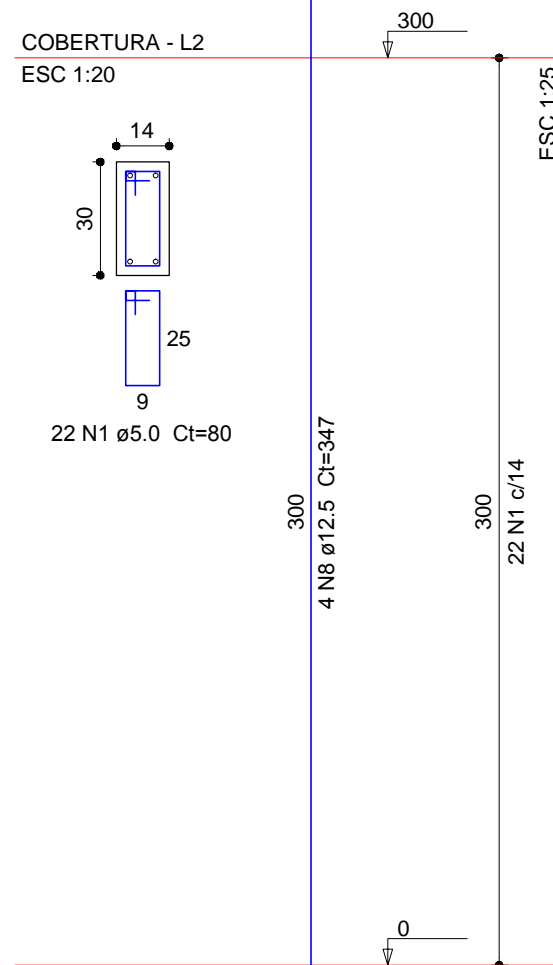
P36=P38=P55=P56



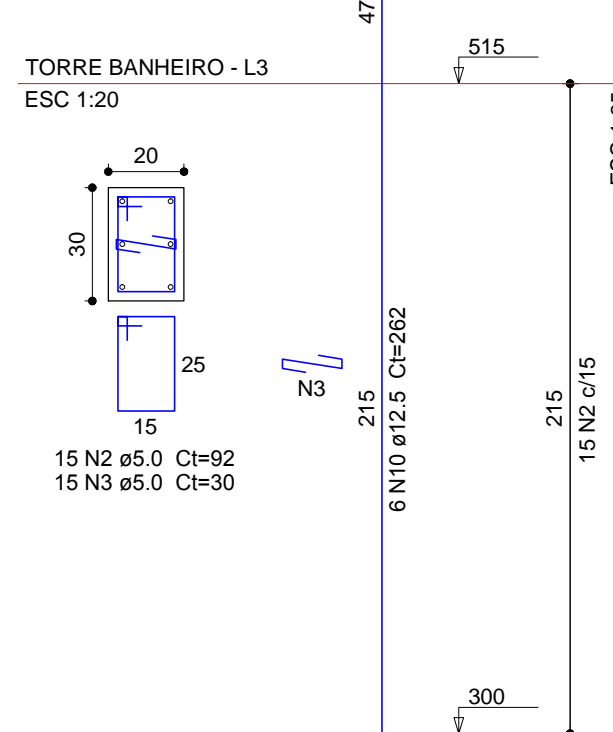
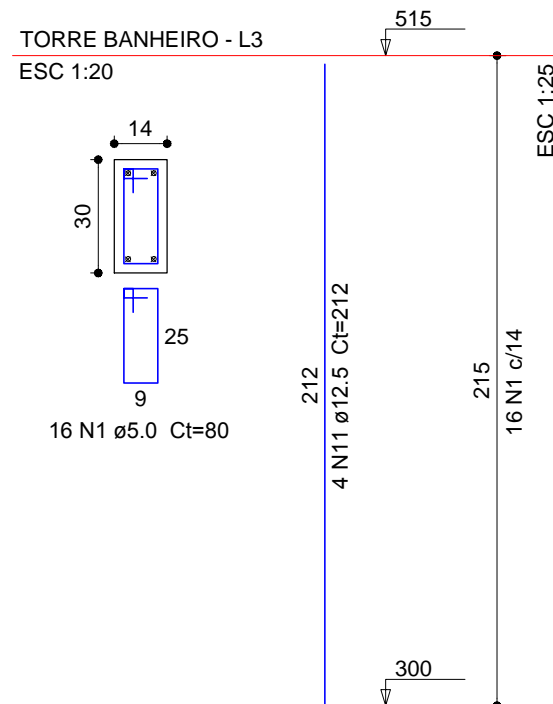
P37=P42=P47=P48



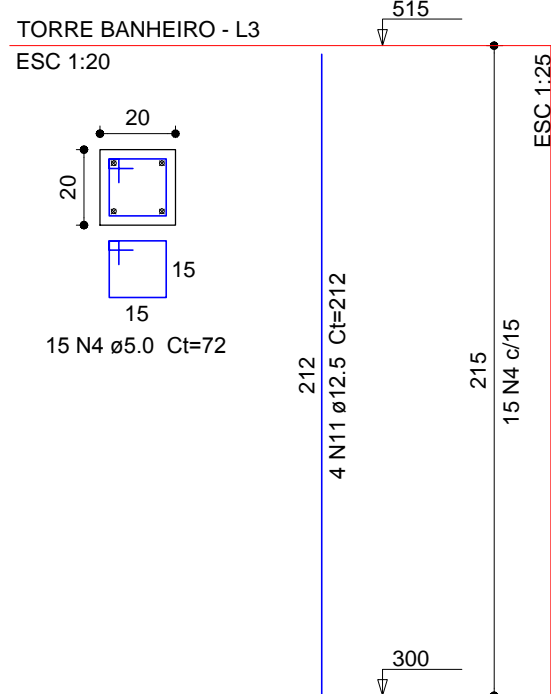
P53=P54=P57=P58=P59=P60



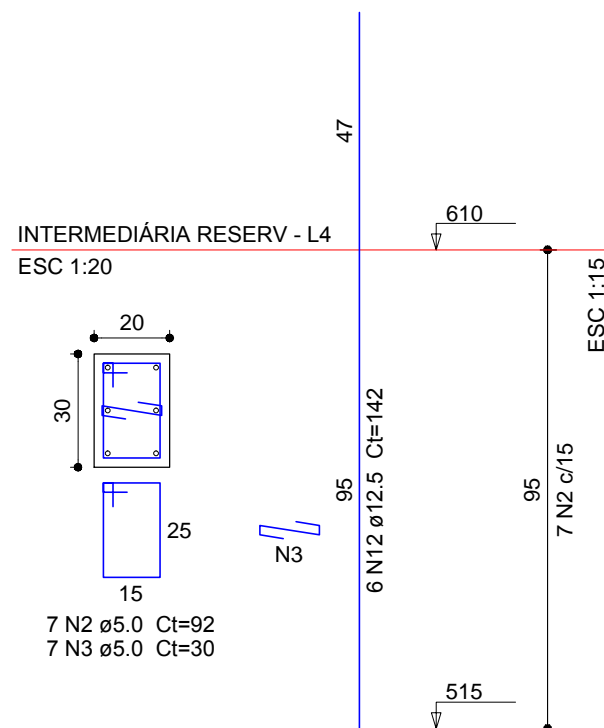
P36=P38=P55=P56


$$P_{53}=P_{54}=P_{57}=P_{58}=P_{59}=P_{60}$$


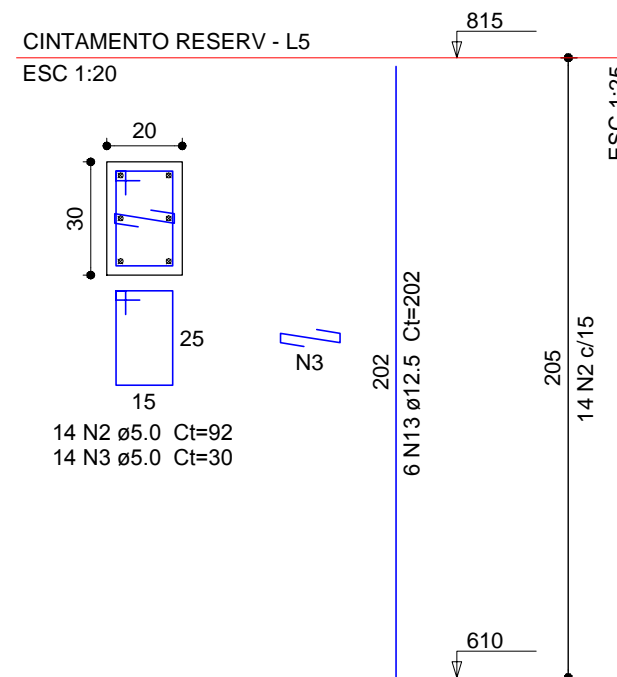
P61=P62



P36=P38=P55=P56



P36=P38=P55=P56



**PRÓ-REITORIA DE ADMINISTRAÇÃO**  
**COORDENAÇÃO DE ENGENHARIA E ARQUITETURA**  
Rua Esmeralda, 430 - Faixa Nova - Camobi - CEP 97110-767 - Santa Maria - Rio Grande do Sul.  
Telefone: (55) 3226-6630

OBRA: **CENTRO DE SAÚDE**

LOCAL: **IF FARROUPILHA - CAMPUS SANTO ÂNGELO**

ÁREA: **385,57m<sup>2</sup>**

PROJETO: **ESTRUTURAL**

ESCALA: **Indicada**

**PROPRIETÁRIO:**

INSTITUTO FEDERAL FARROUPILHA

DATA: **Julho/2018**

DESENHO: **lagor**

RESPONSÁVEL:

ENG. CIVIL LETÍCIA ZORZELA - CREA RS 150538

PRANCHA: **EST 08/23**