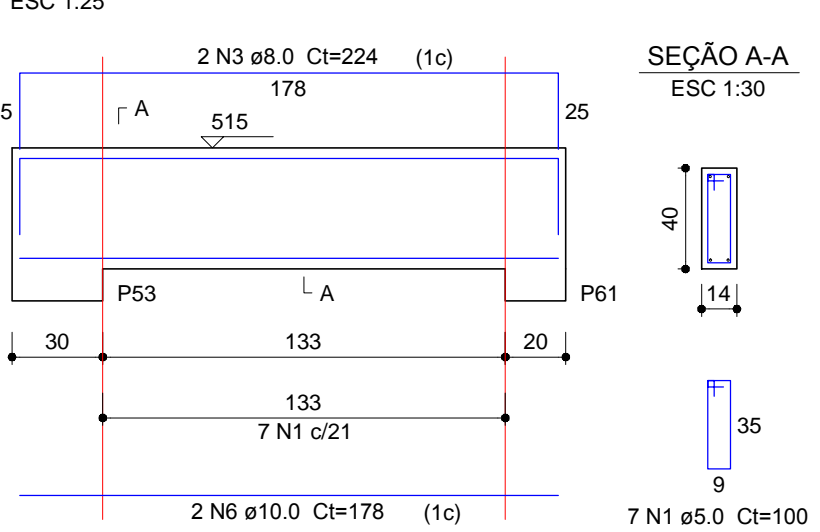
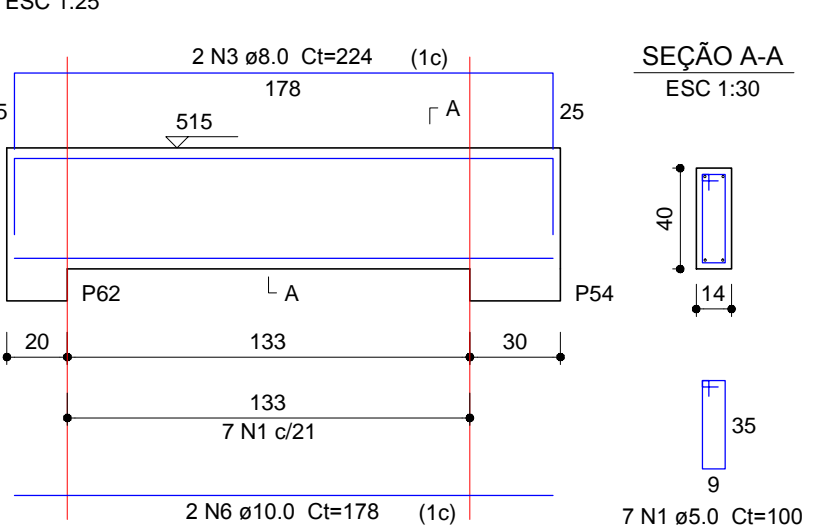


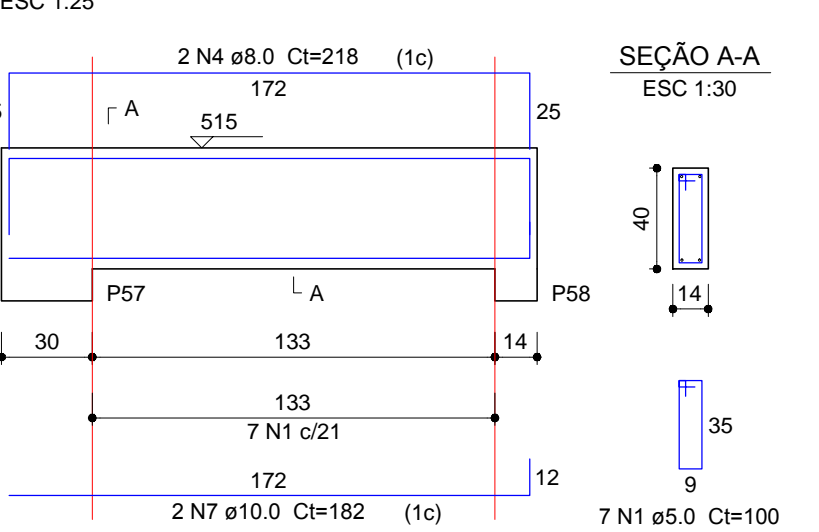
V1 (14 x 40)



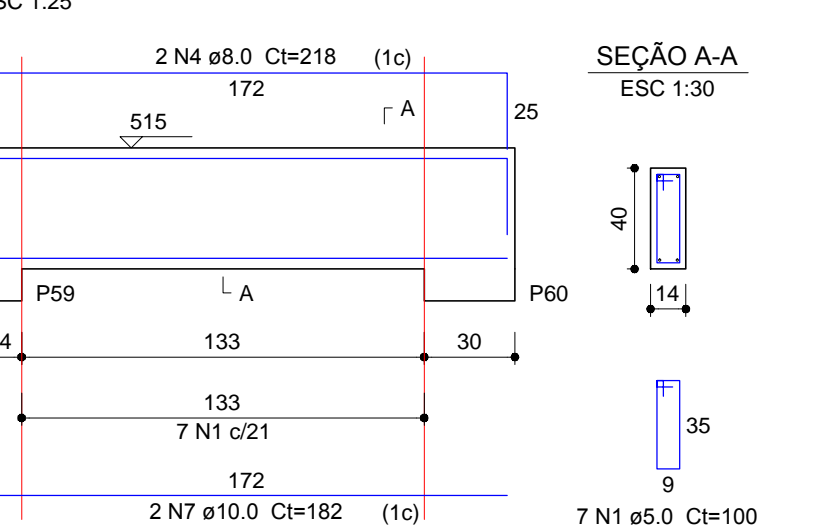
V2 (14 x 40)



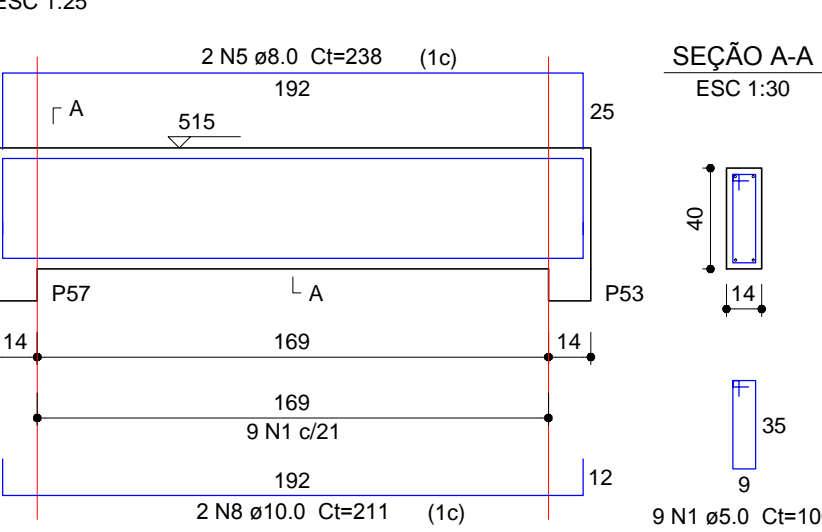
V3 (14 x 40)



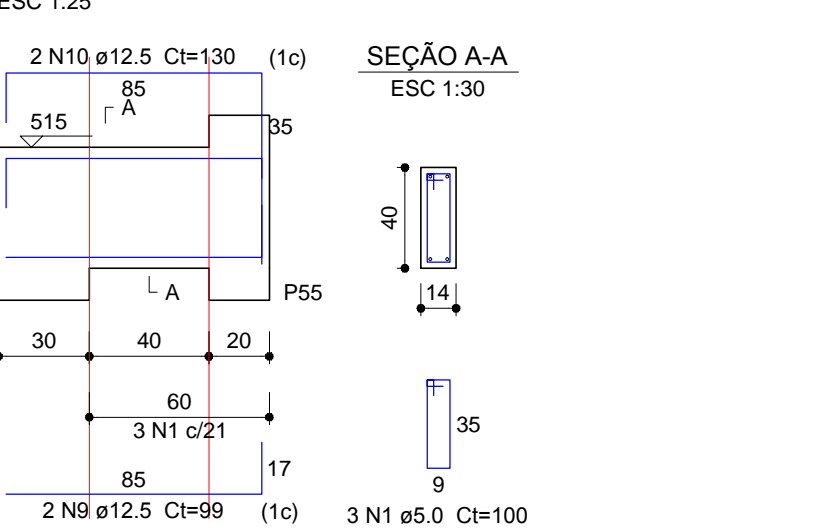
V4 (14 x 40)



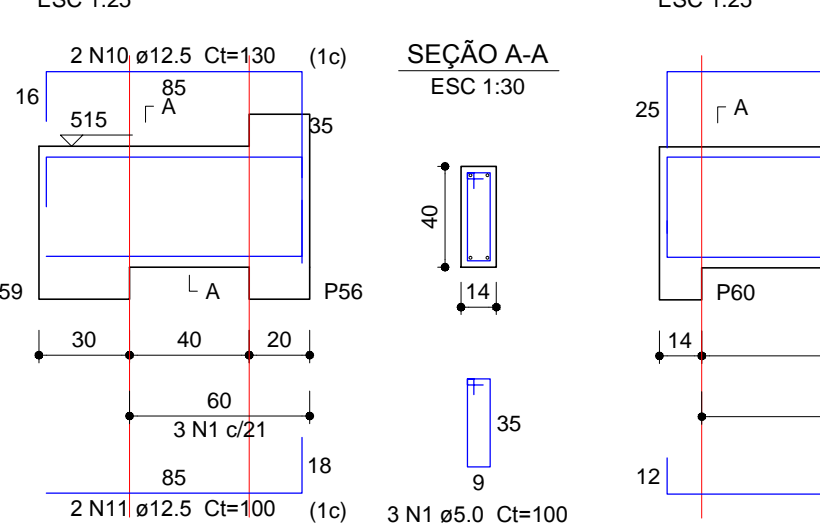
V5 (14 x 40)



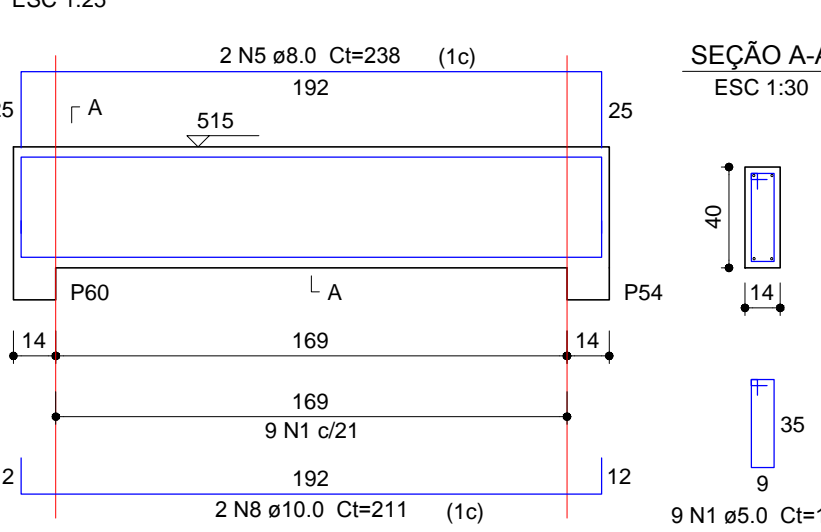
V6 (14 x 40)



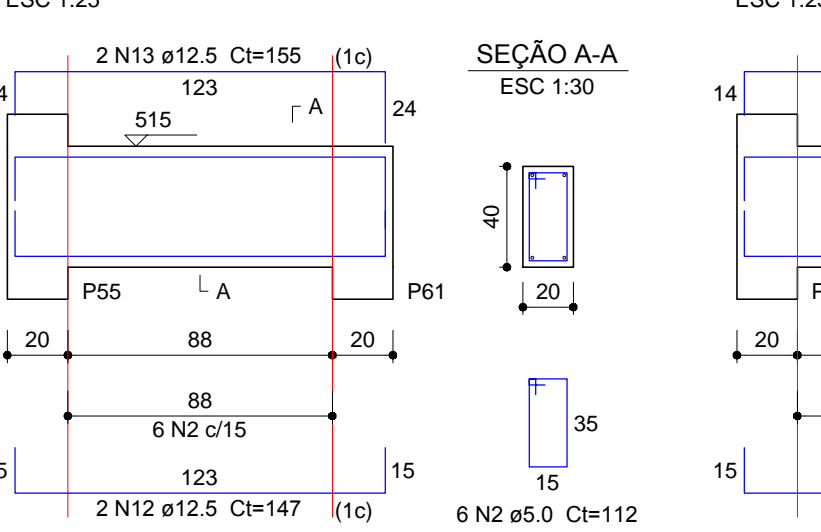
V7 (14 x 40)



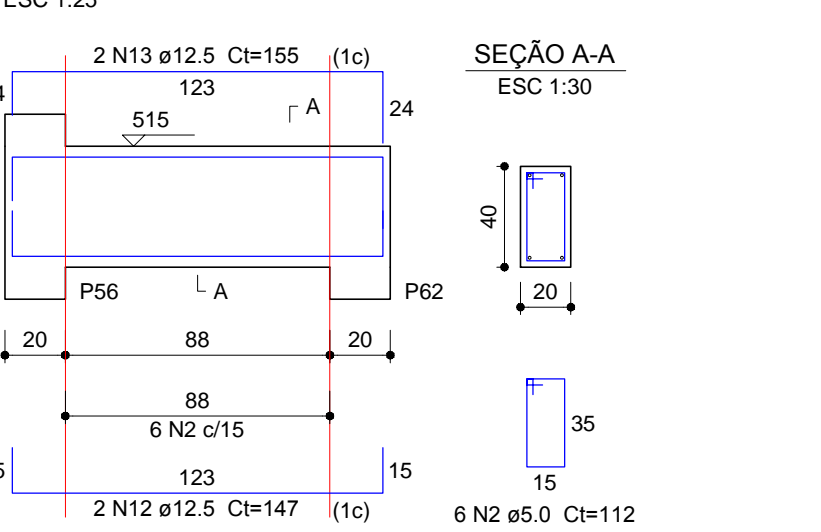
V8 (14 x 40)



V9 (20 x 40)



V10 (20 x 40)



Vigas Pavimento Torre Banheiro escala 1:25

Relação do aço

AÇO	N	DIAM (mm)	QUANT	C.UNIT (cm)	C.TOTAL (cm)
CA60	1	5.0	52	100	5200
V4	2	5.0	12	112	1344
V7	3	8.0	4	224	896
V10	4	8.0	4	218	872
	5	8.0	4	238	952
	6	10.0	4	178	712
	7	10.0	4	182	728
	8	10.0	4	211	844
	9	12.5	2	99	198
	10	12.5	4	130	520
	11	12.5	2	100	200
	12	12.5	4	147	588
	13	12.5	4	155	620

Resumo do aço

AÇO	DIAM (mm)	C.TOTAL (m)	PESO + 10 % (kg)
CA50	8.0	27.2	11.8
	10.0	22.9	15.5
CA60	5.0	65.5	11.1
PESO TOTAL (kg)			
CA50	49.8		
CA60	11.1		

Volume de concreto (C-25) = 0.93 m³
Área de forma = 14.71 m²

Relação do aço

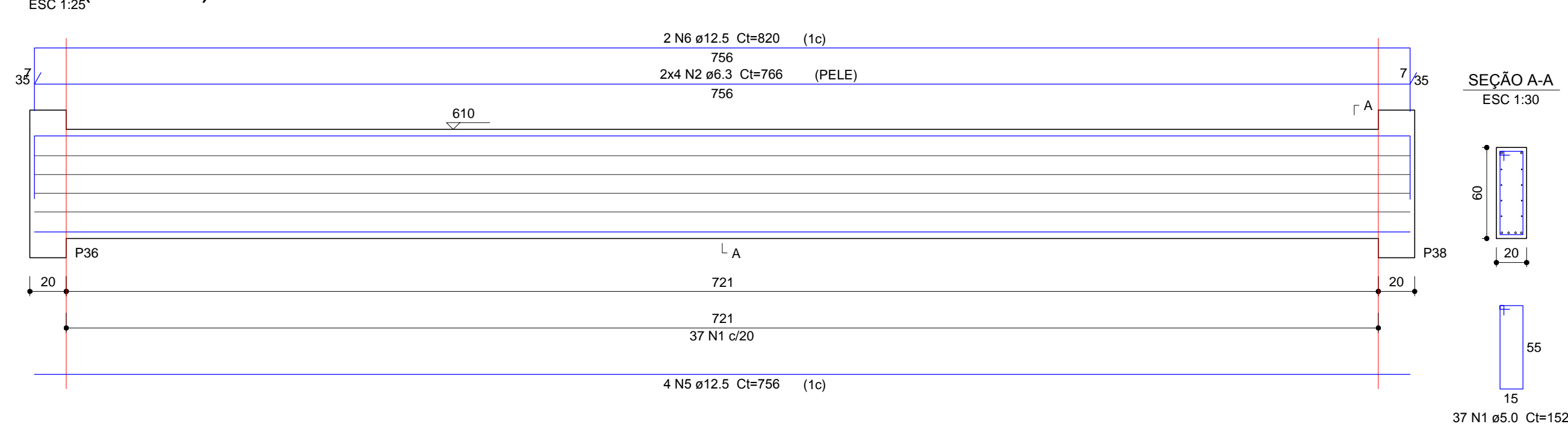
AÇO	N	DIAM (mm)	QUANT	C.UNIT (cm)	C.TOTAL (cm)
CA60	1	5.0	135	152	20520
CA50	2	6.3	8	766	6128
	3	6.3	8	CORR	6048
	4	6.3	16	656	10496
	5	12.5	8	756	6048
	6	12.5	2	820	1640
	7	12.5	2	778	1556
	8	12.5	8	653	5224
	9	12.5	4	696	2784

Resumo do aço

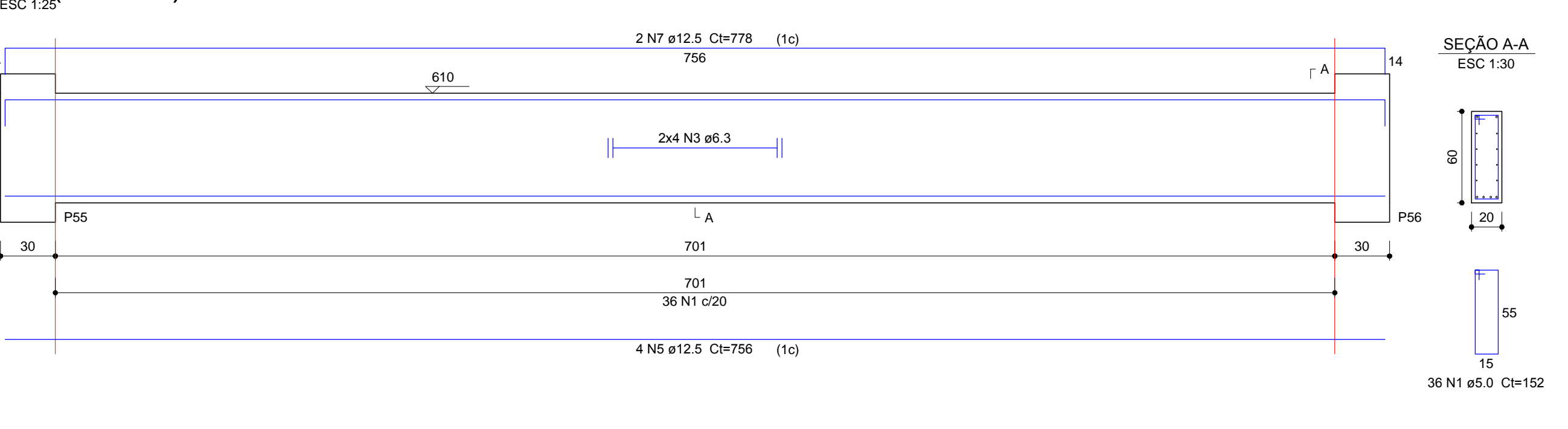
AÇO	DIAM (mm)	C.TOTAL (m)	PESO + 10 % (kg)
CA50	6.3	228.8	61
	12.5	172.6	182.8
CA60	5.0	205.2	34.8
PESO TOTAL (kg)			
CA50	243.8		
CA60	34.8		

Volume de concreto (C-25) = 3.4 m³
Área de forma = 39.72 m²

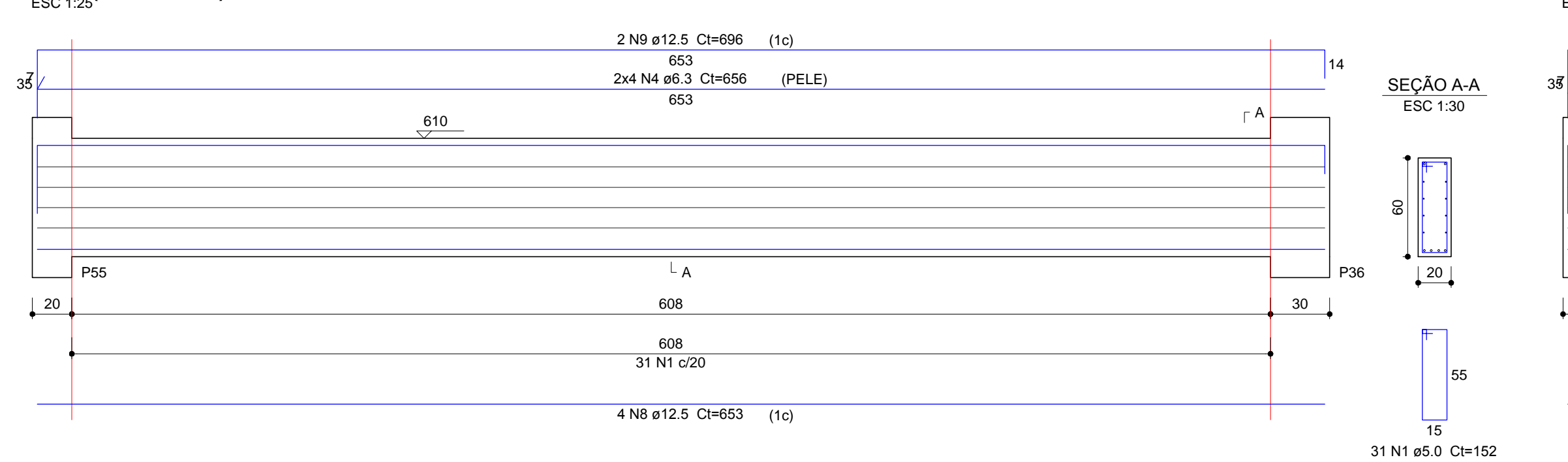
V1 (20 x 60)



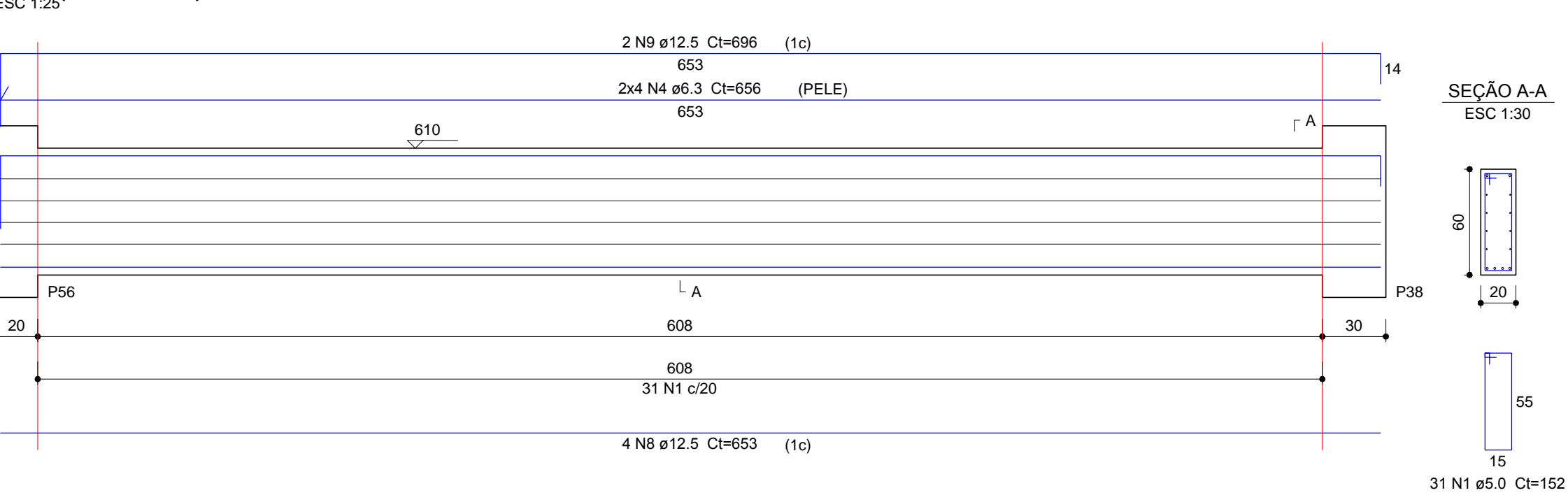
V2 (20 x 60)



V3 (20 x 60)

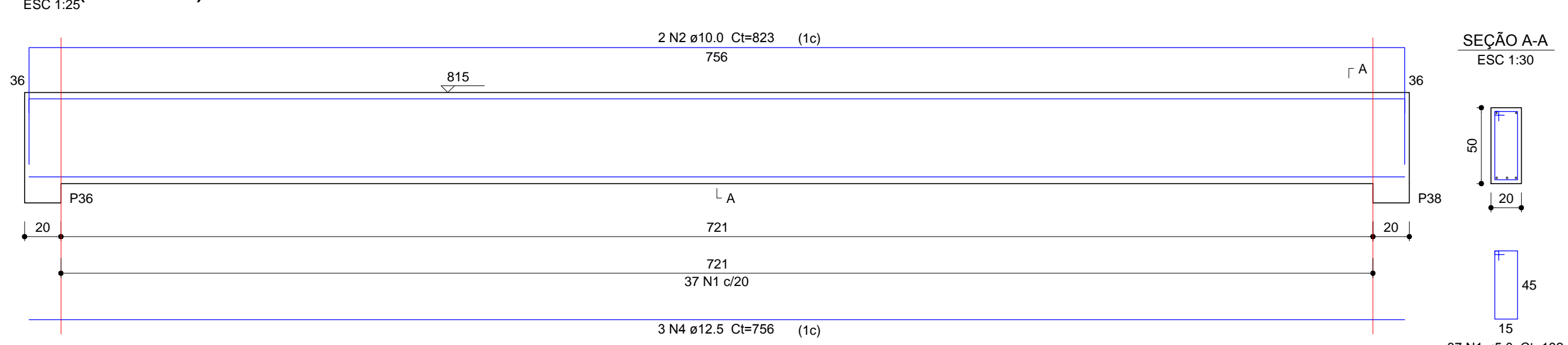


V4 (20 x 60)

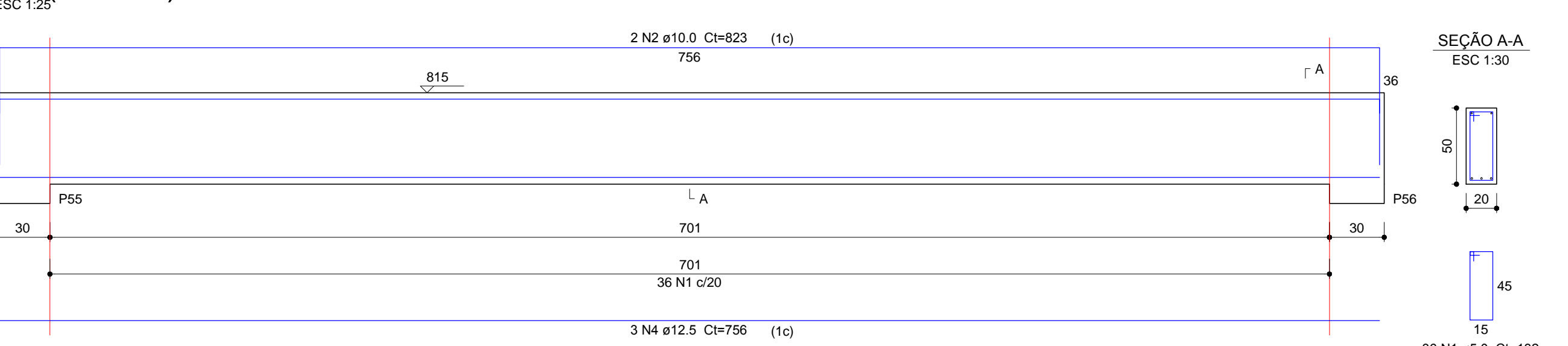


Vigas Pavimento Cintamento reservatório escala 1:25

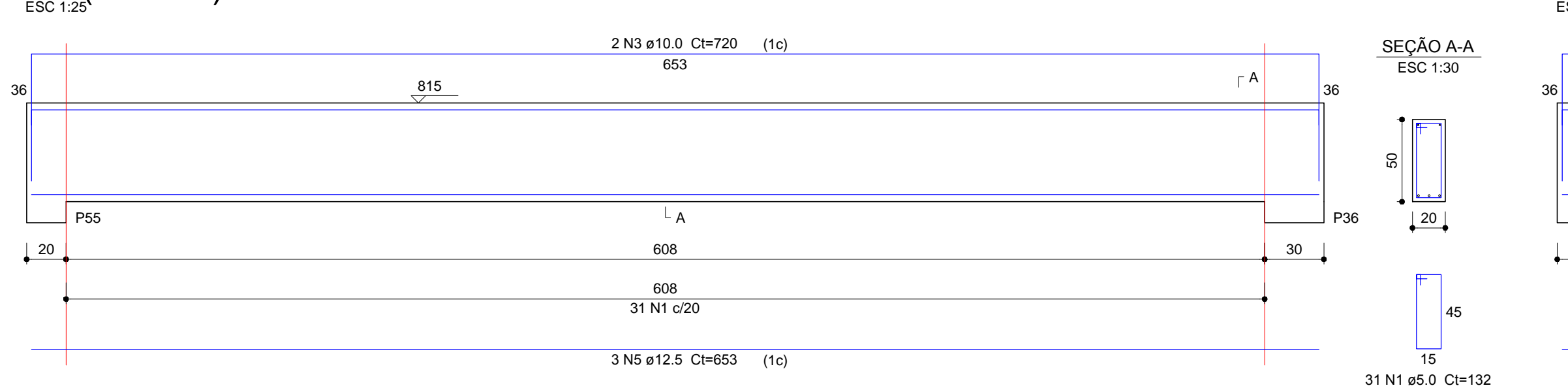
V1 (20 x 50)



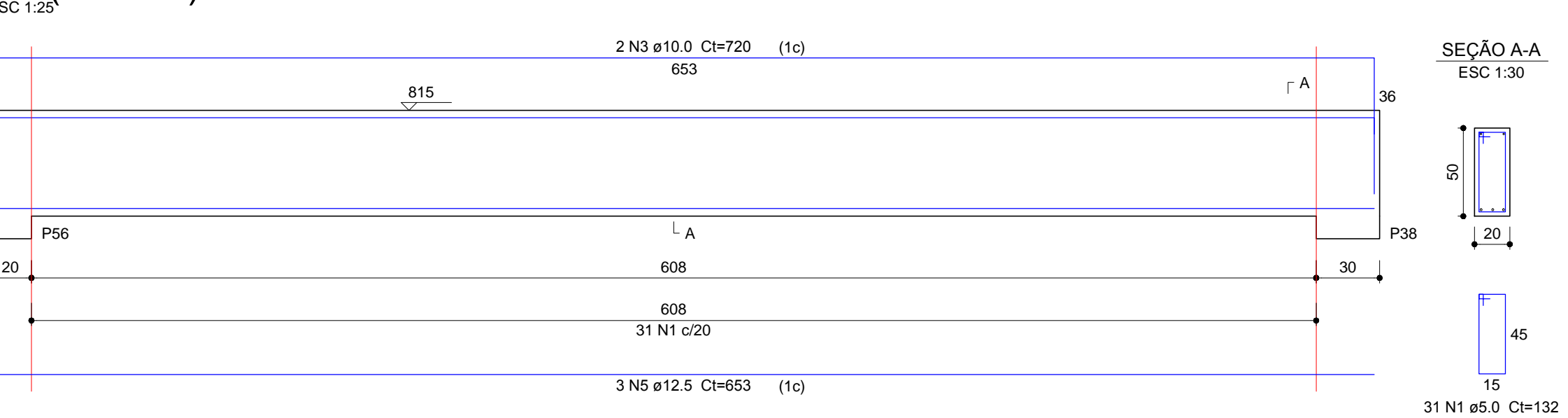
V2 (20 x 50)



V3 (20 x 50)



V4 (20 x 50)



Vigas Pavimento Superior reservatório escala 1:25

Relação do aço

AÇO	N	DIAM (mm)	QUANT	C.UNIT (cm)	C.TOTAL (cm)
CA60	1	5.0	135	132	17820
CA50	2	10.0	4	823	3292
	3	10.0	4	720	2880
	4	12.5	6	756	4536
	5	12.5	6	653	3918

Resumo do aço

AÇO	DIAM (mm)	C.TOTAL (m)	PESO + 10 % (kg)
CA50	10.0	61.8	41.9
	12.5	84.6	89.6
CA60	5.0	178.2	30.2
PESO TOTAL (kg)			
CA50	131.4		
CA60	30.2		

Volume de concreto (C-25) = 2.84 m³
Área de forma = 34.04 m²

INSTITUTO FEDERAL FARROUPILHA

PRÓ-REITORIA DE ADMINISTRAÇÃO

COORDENAÇÃO DE ENGENHARIA E ARQUITETURA

Rua Esmeralda, 439 - Foz de Nova - Camobi - CEP 97110-767 - Santa Maria - Rio Grande do Sul.

Telefone: (55) 3226-6430

OBRA: CENTRO DE SAÚDE

LOCAL: IF FARROUPILHA - CAMPUS SANTO ÂNGELO

PROJETO: ESTRUTURAL

CONTEÚDO: ARM. VIGAS SUPERIORES

PROPRIETÁRIO: INSTITUTO FEDERAL FARROUPILHA

RESPONSÁVEL: ENG. CIVIL LETÍCIA ZORZELA - CREA RS 150530

ÁREA: 385,57m²

ESCALA: Indicada

DATA: Julho/2018

DESENHO: Iagor

PRANCHA: EST 19/23