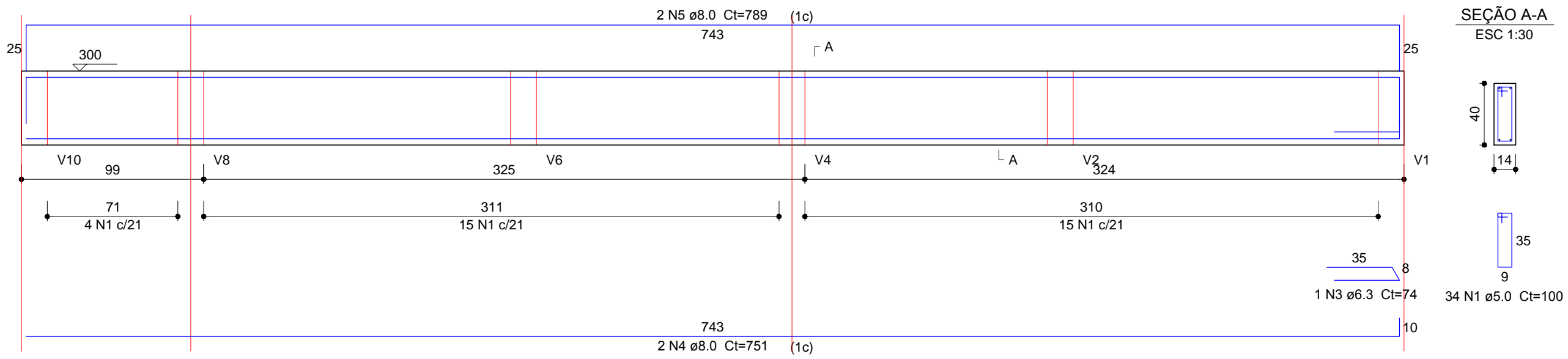


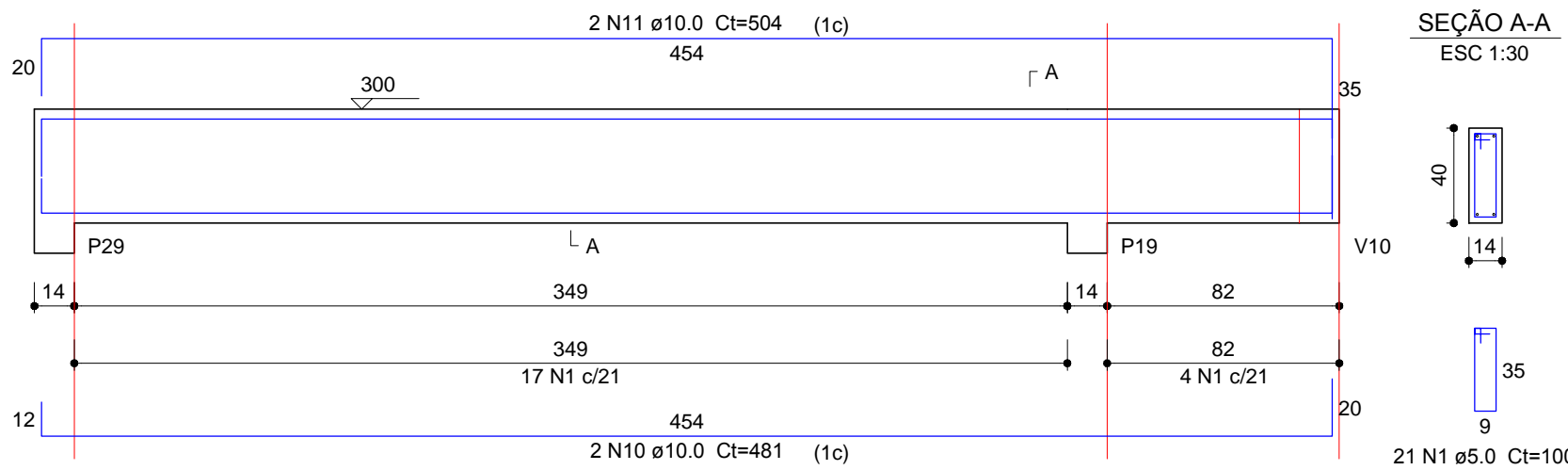
V54 (14 x 40)

ESC 1:25



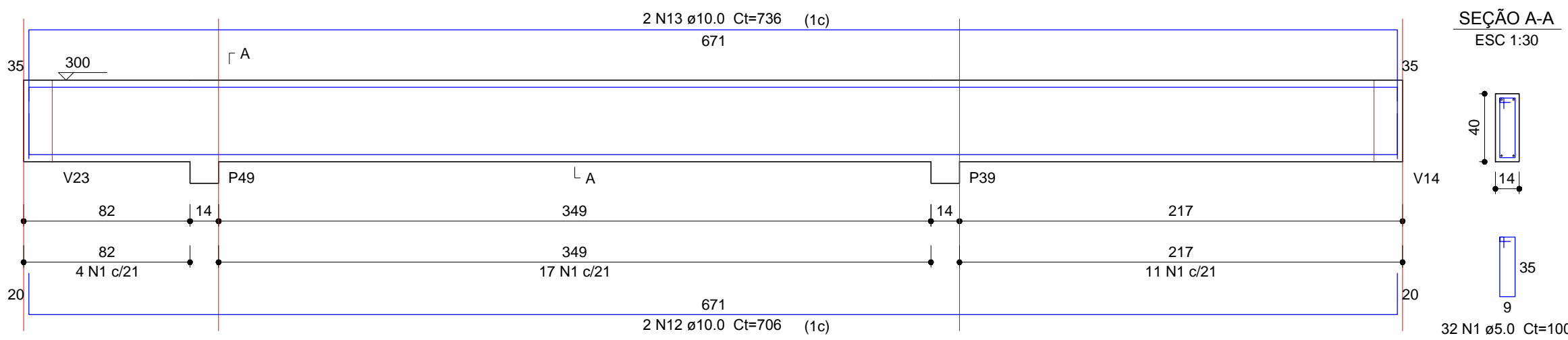
V56 (14 x 40)

ESC 1:25



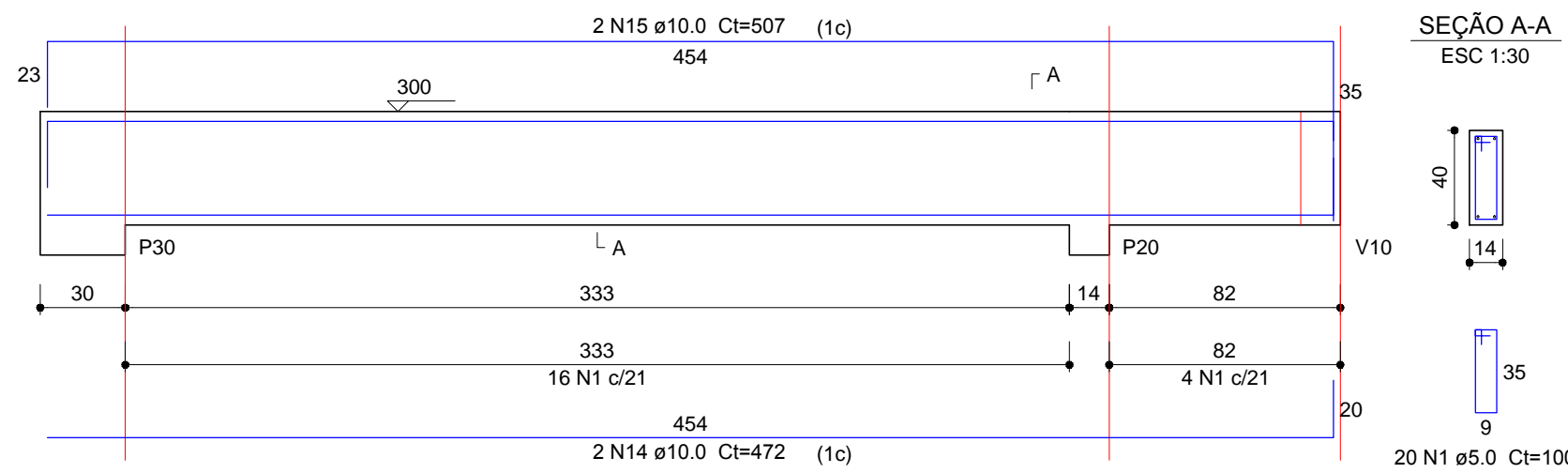
V57 (14 x 40)

ESC 1:25



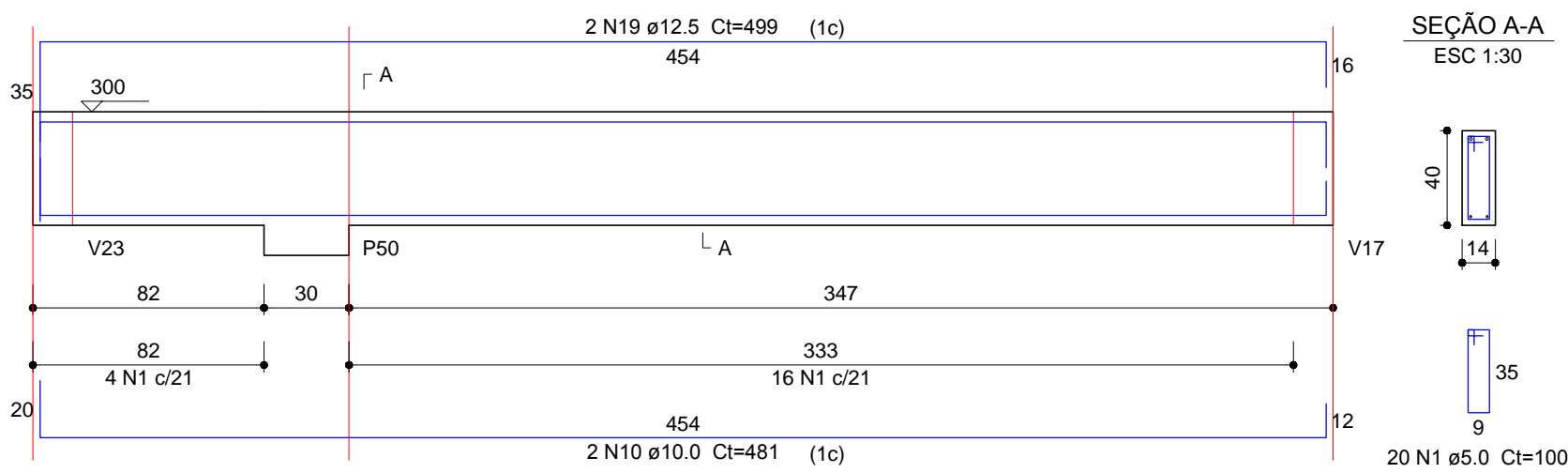
V58 (14 x 40)

ESC 1:25



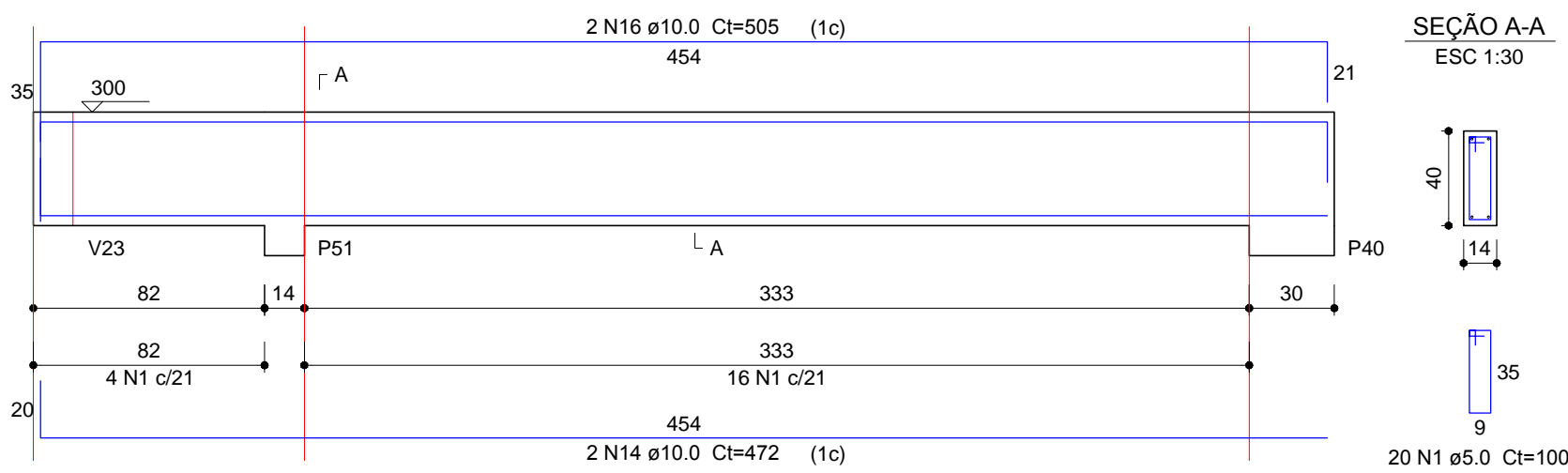
V59 (14 x 40)

ESC 1:25



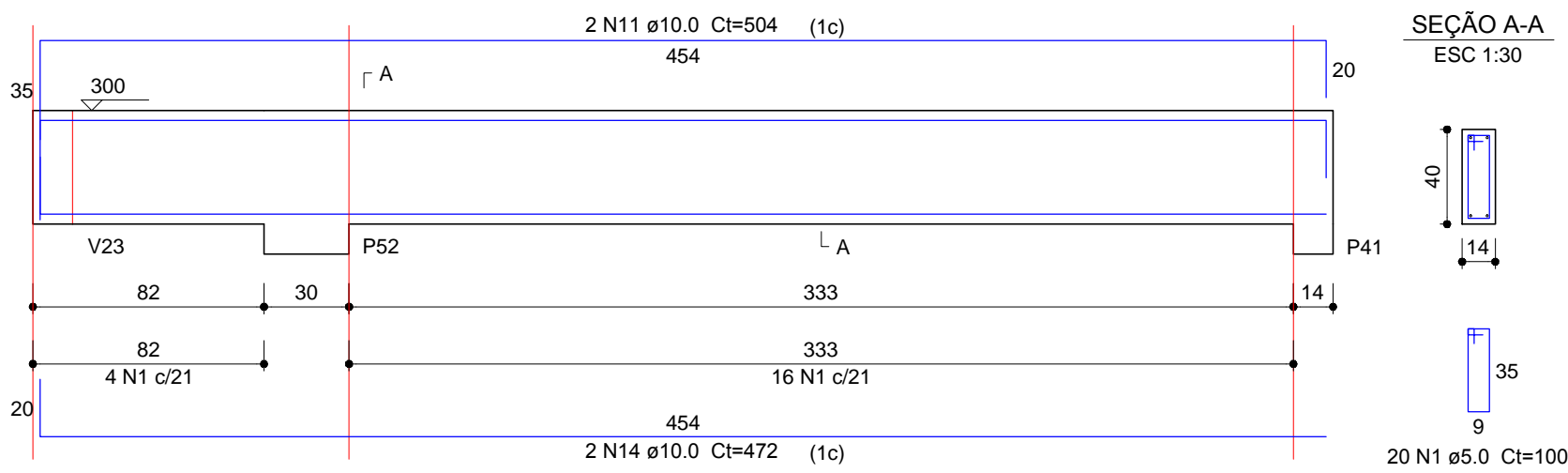
V60 (14 x 40)

ESC 1:25



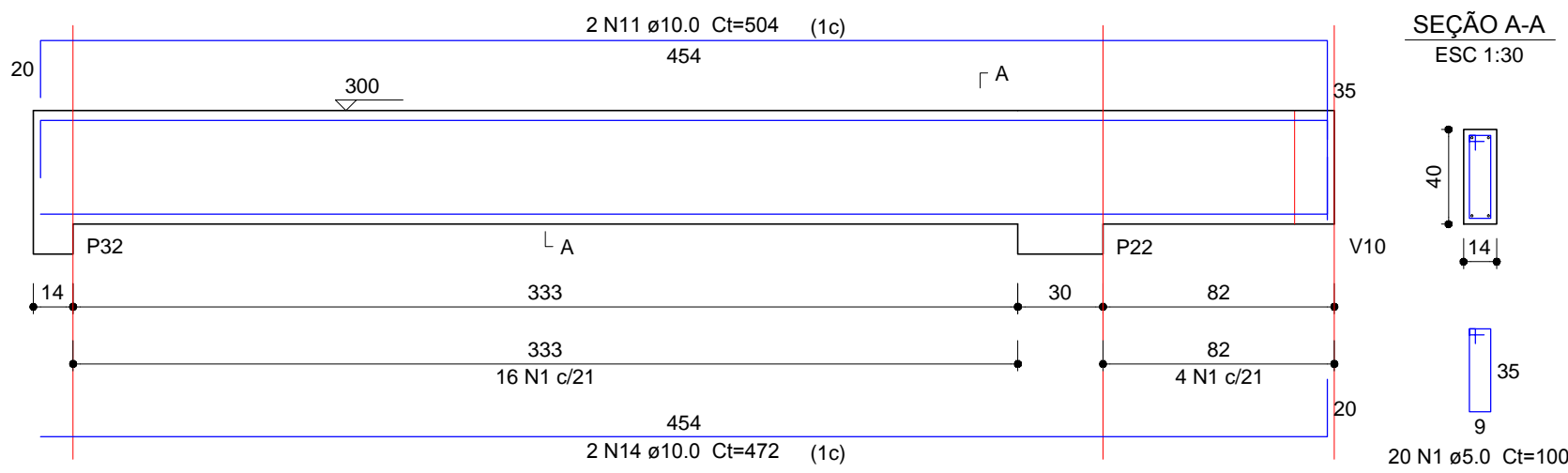
V63 (14 x 40)

ESC 1:25



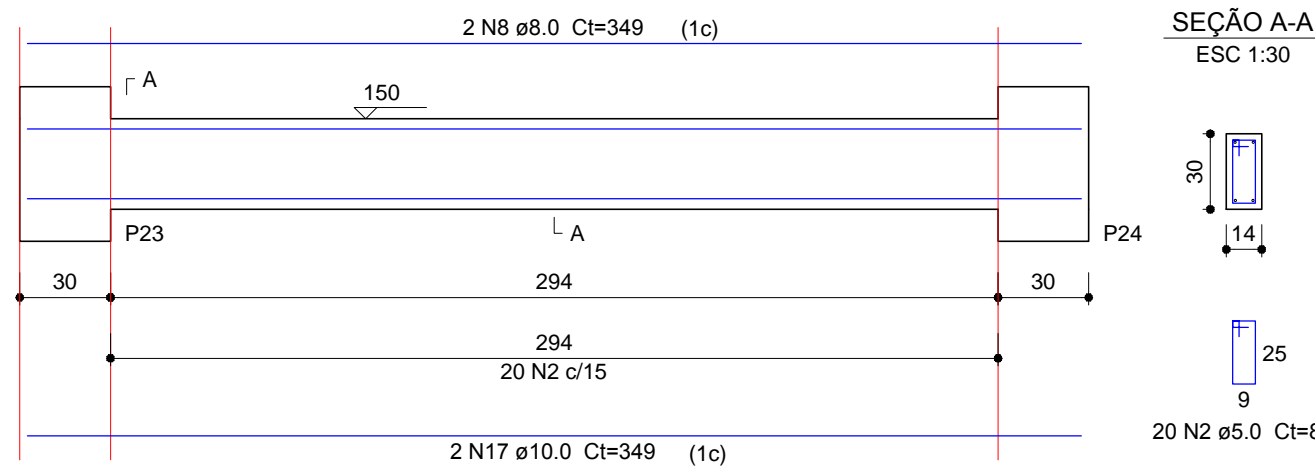
V64 (14 x 40)

ESC 1:25



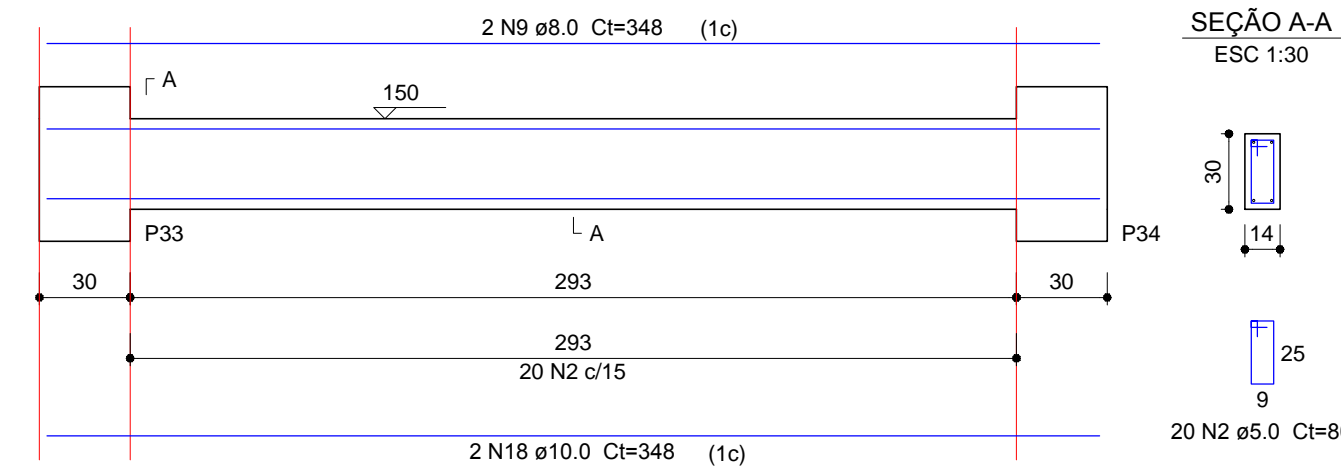
V65 (14 x 30)

ESC 1:25



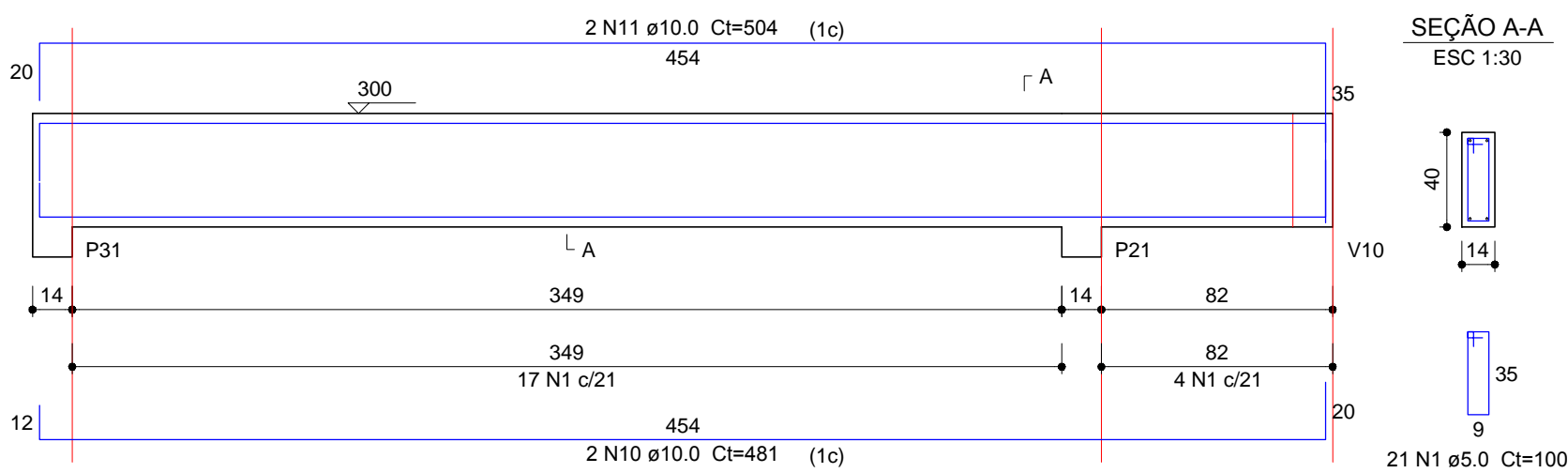
V66 (14 x 30)

ESC 1:25



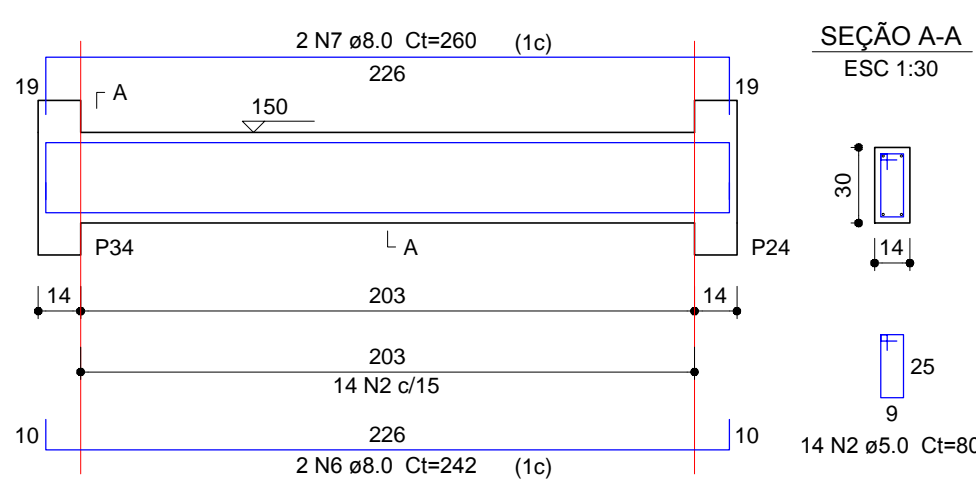
V61 (14 x 40)

ESC 1:25



V67 (14 x 30)

ESC 1:25



Relação do aço

AÇO	N	DIAM (mm)	QUANT	C.UNIT (cm)	C.TOTAL (cm)
V54	1	5.0	208	100	20800
V58	2	5.0	54	80	4320
V61	3	6.3	1	74	74
V65	4	8.0	2	751	1502
	5	8.0	2	789	1578
	6	8.0	2	242	484
	7	8.0	2	260	520
	8	8.0	2	349	698
	9	8.0	2	348	696
	10	10.0	6	481	2886
	11	10.0	8	504	4032
	12	10.0	2	706	1412
	13	10.0	2	736	1472
	14	10.0	8	472	3776
	15	10.0	2	507	1014
	16	10.0	2	505	1010
	17	10.0	2	349	698
	18	10.0	2	348	696
	19	12.5	2	499	998

Resumo do aço

AÇO	DIAM (mm)	C.TOTAL (m)	PESO + 10 % (kg)
CA50	6.3	0.8	0.2
	8.0	54.8	23.8
	10.0	170	115.3
	12.5	10	10.6
CA60	5.0	251.2	42.6
PESO TOTAL (kg)			
CA50	149.8		
CA60	42.6		

Volume de concreto (C-25) = 2.99 m³
Área de forma = 50.49 m²



PRÓ-REITORIA DE ADMINISTRAÇÃO
COORDENAÇÃO DE ENGENHARIA E ARQUITETURA
Rua Esmeralda, 430 - Faixa Nova - Camobi - CEP 97110-747 - Santa Maria - Rio Grande do Sul.
Telefone: (55) 3226-6630

OBRA: **CENTRO DE SAÚDE**

LOCAL: **IF FARROUPILHA - CAMPUS SANTO ÂNGELO**

PROJETO: **ESTRUTURAL**

ÁREA: **385,57m²**

CONTEÚDO: **ARM. VIGAS COBERTUTA**

ESCALA: **Indicada**

PROPRIETÁRIO:
INSTITUTO FEDERAL FARROUPILHA

DATA: **Julho/2018**

RESPONSÁVEL:
ENG. CIVIL LETÍCIA ZORZELA - CREA RS 150530

DESENHO: **Iagor**

PRANCHA: **EST 18/23**