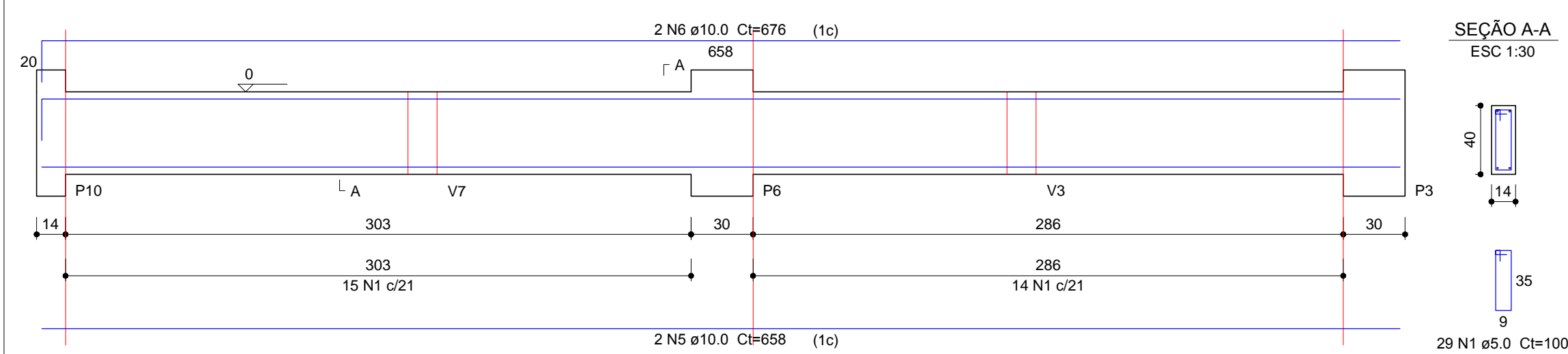
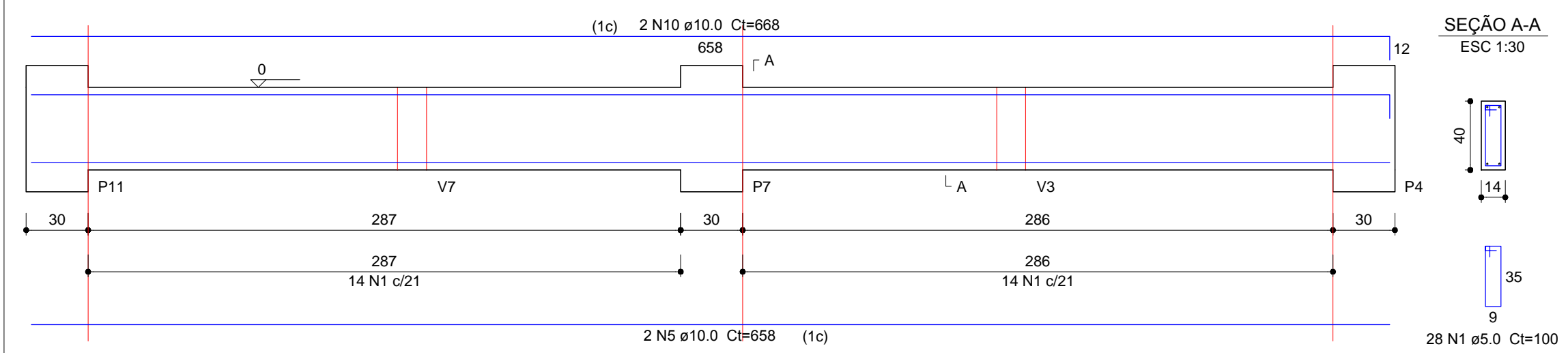


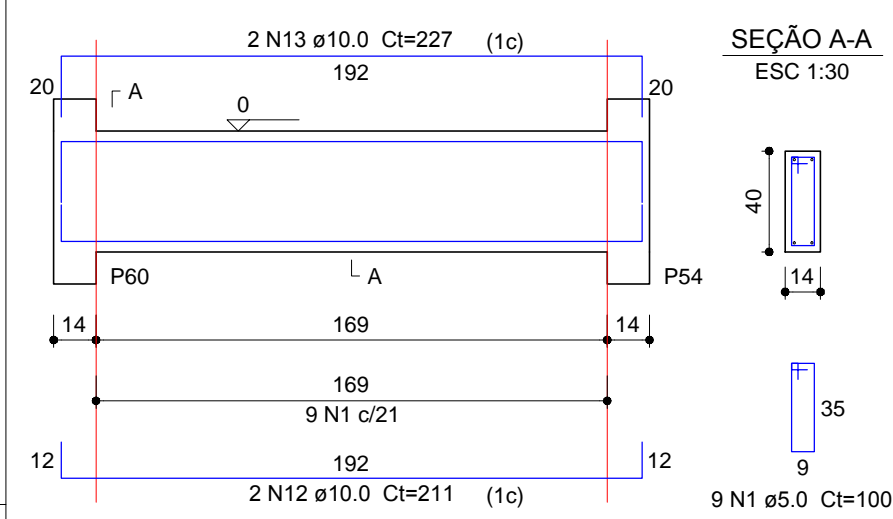
V39 (14 x 40)



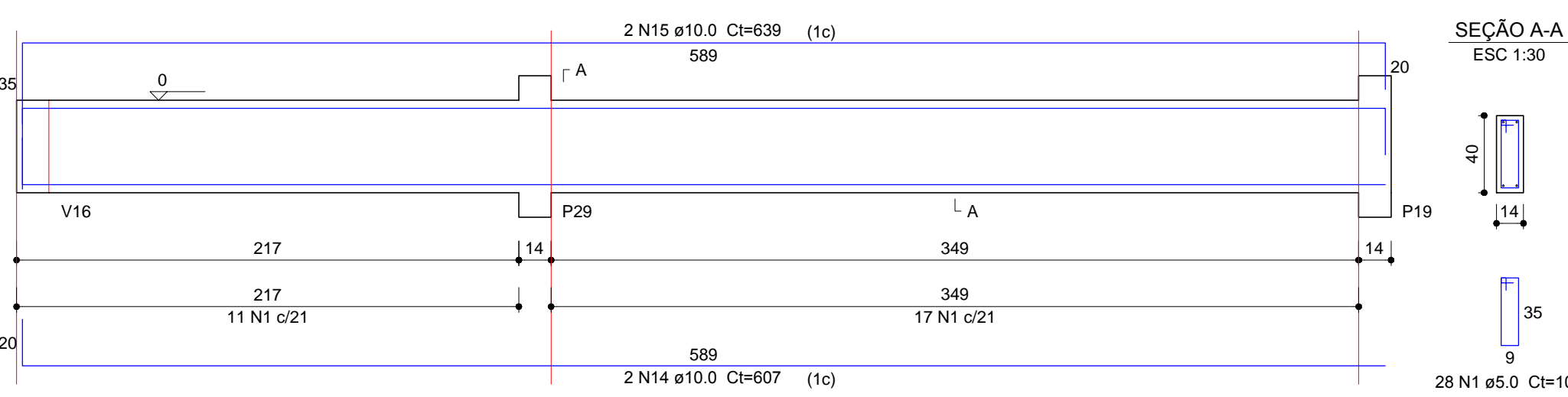
V44 (14 x 40)



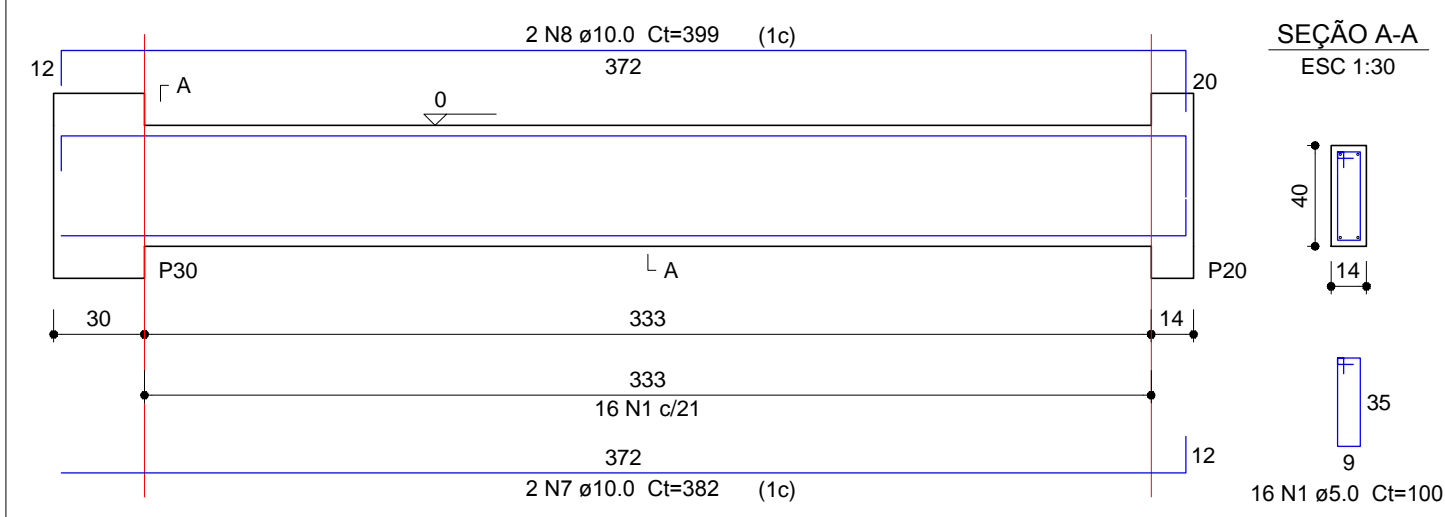
V46 (14 x 40)



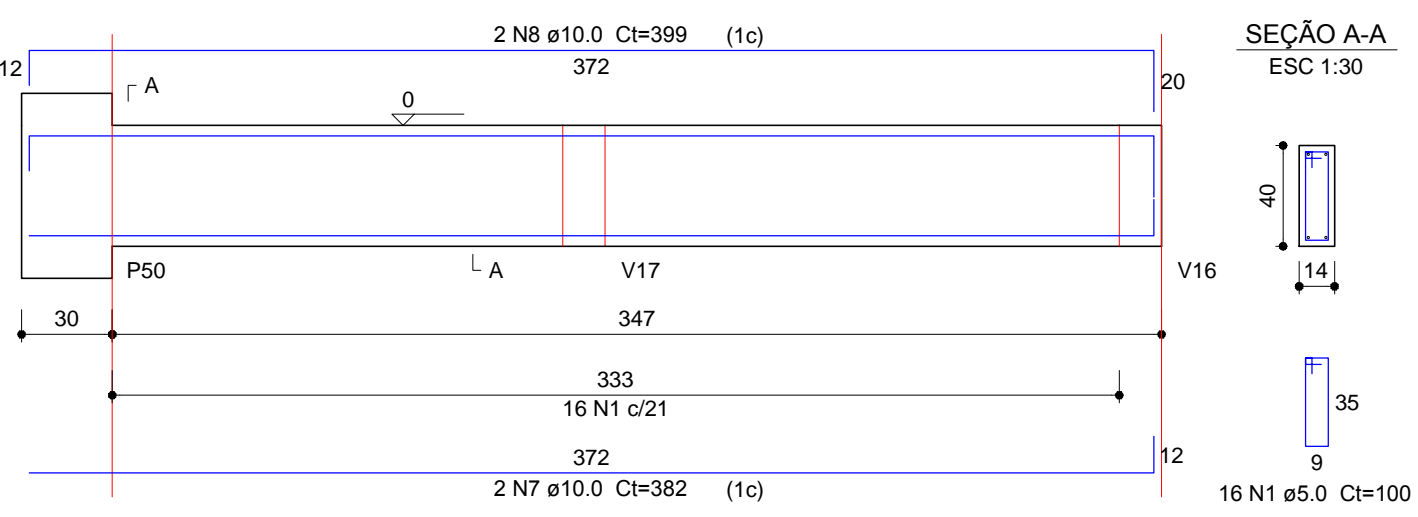
V47 (14 x 40)



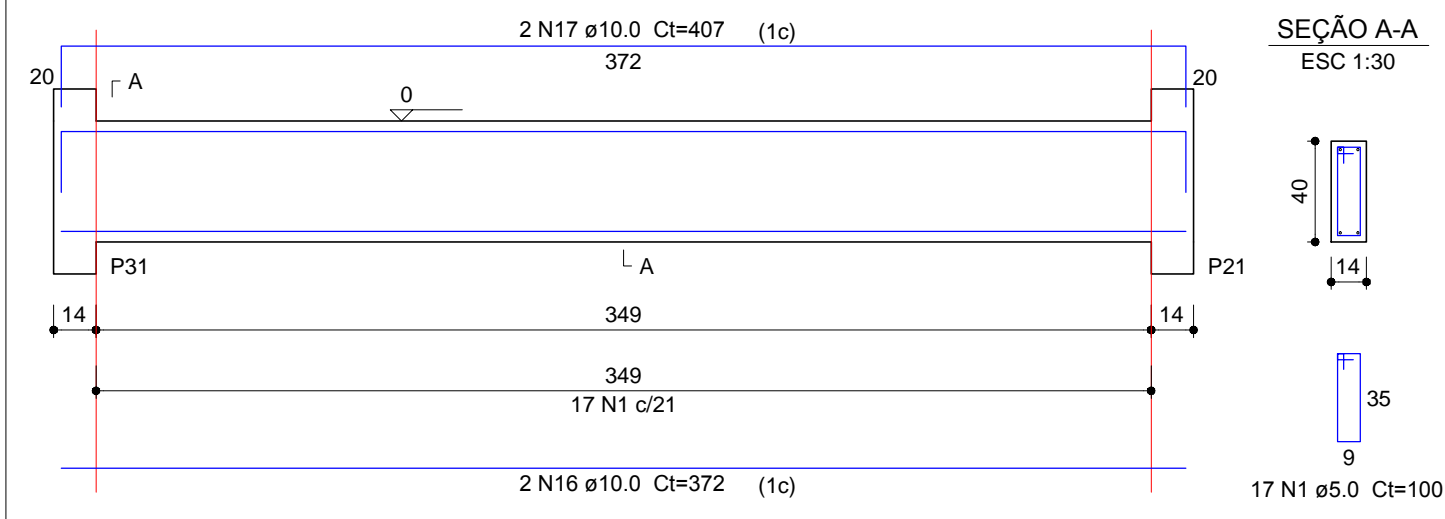
V49 (14 x 40)



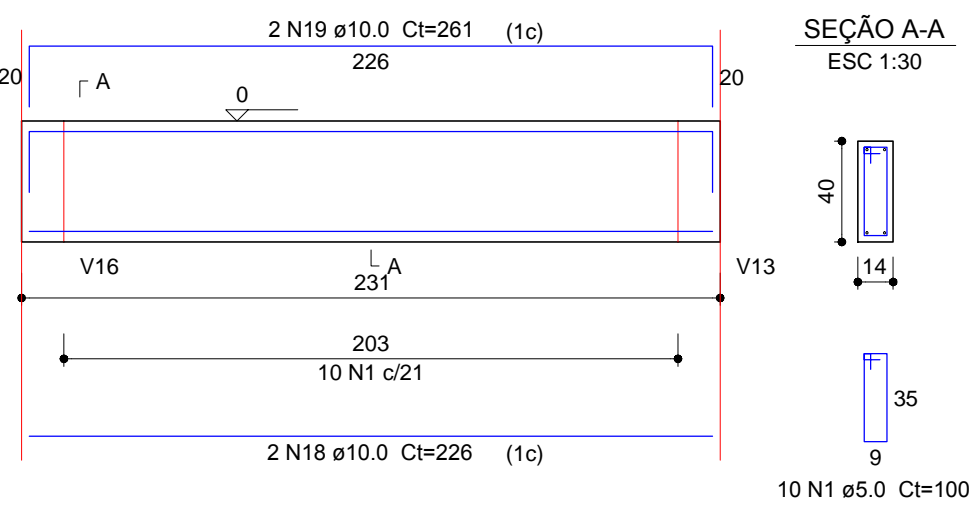
V50 (14 x 40)



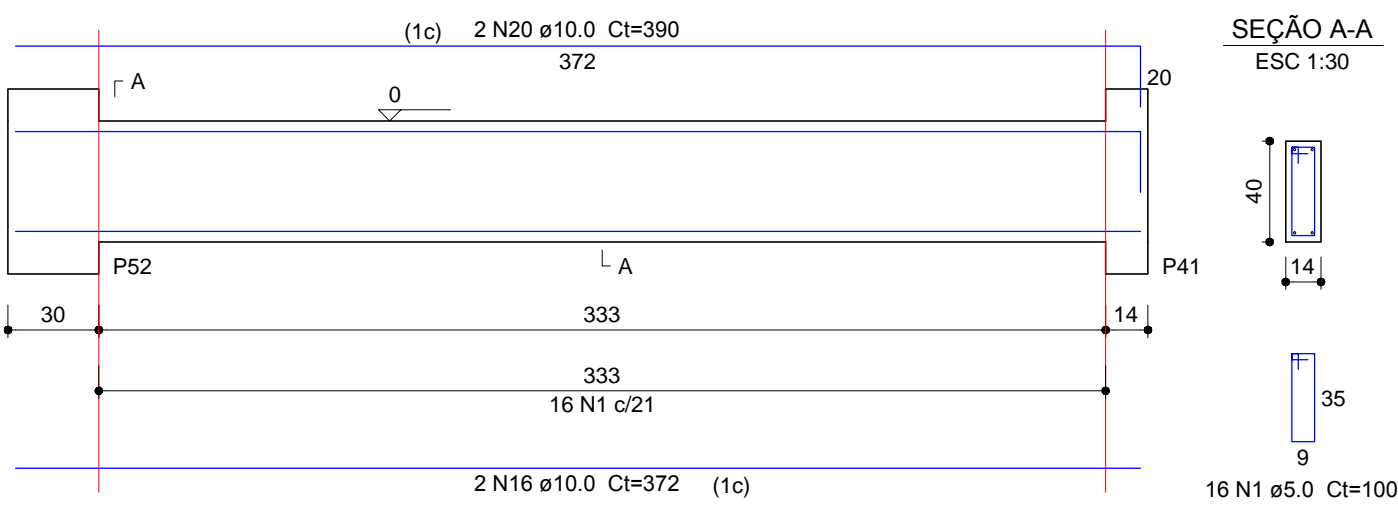
V52 (14 x 40)



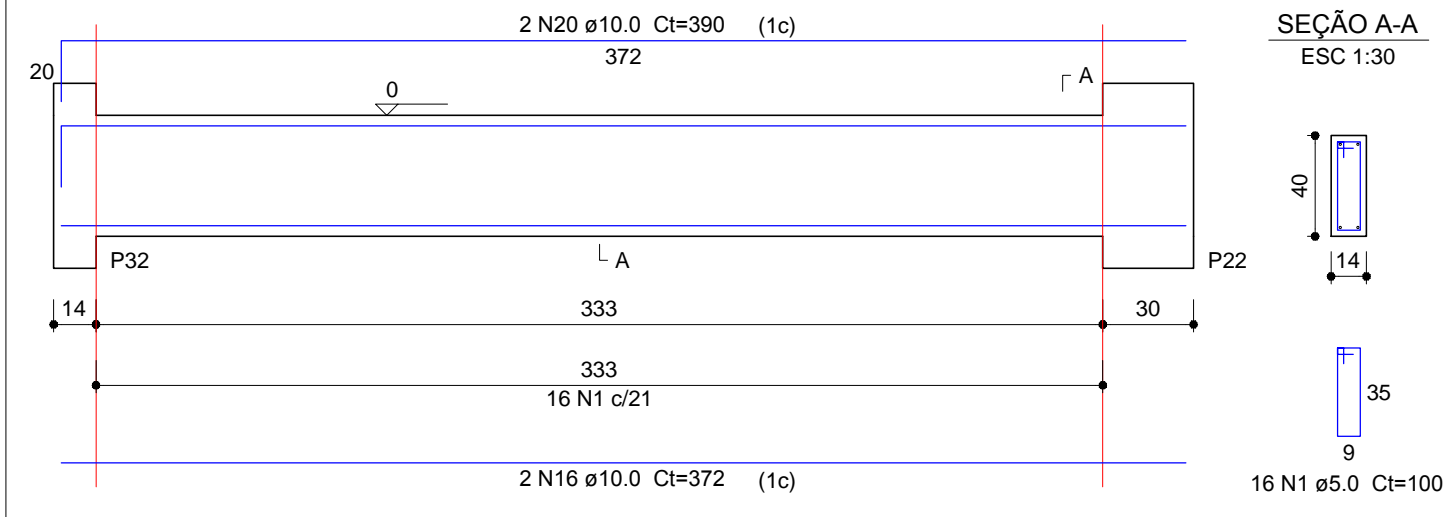
V53 (14 x 40)



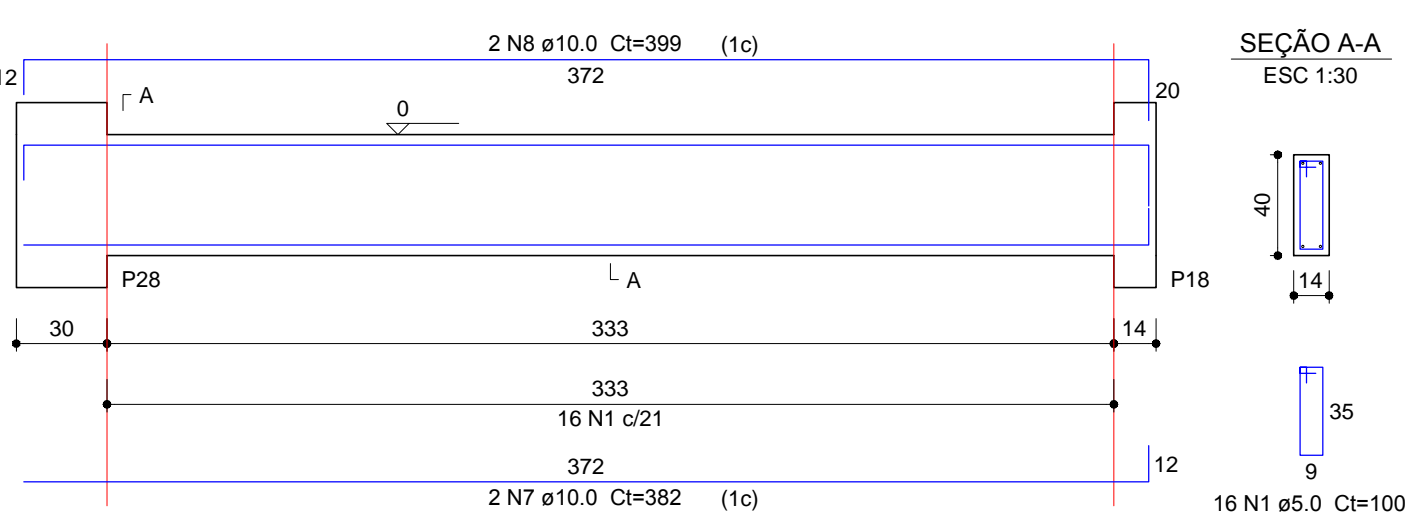
V54 (14 x 40)



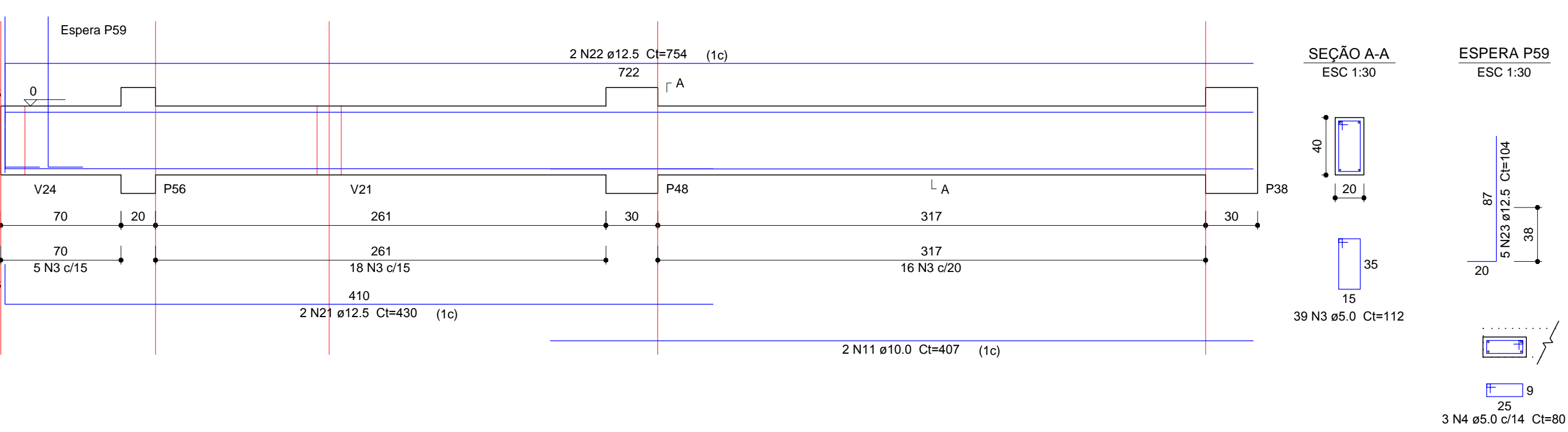
V55 (14 x 40)



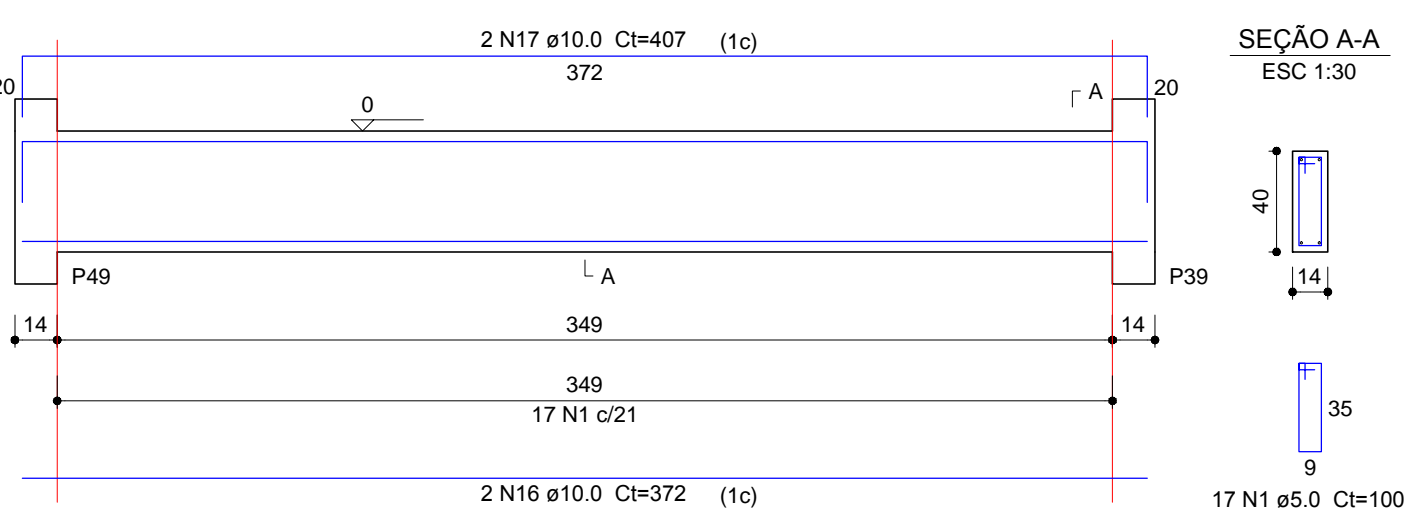
V42 (14 x 40)



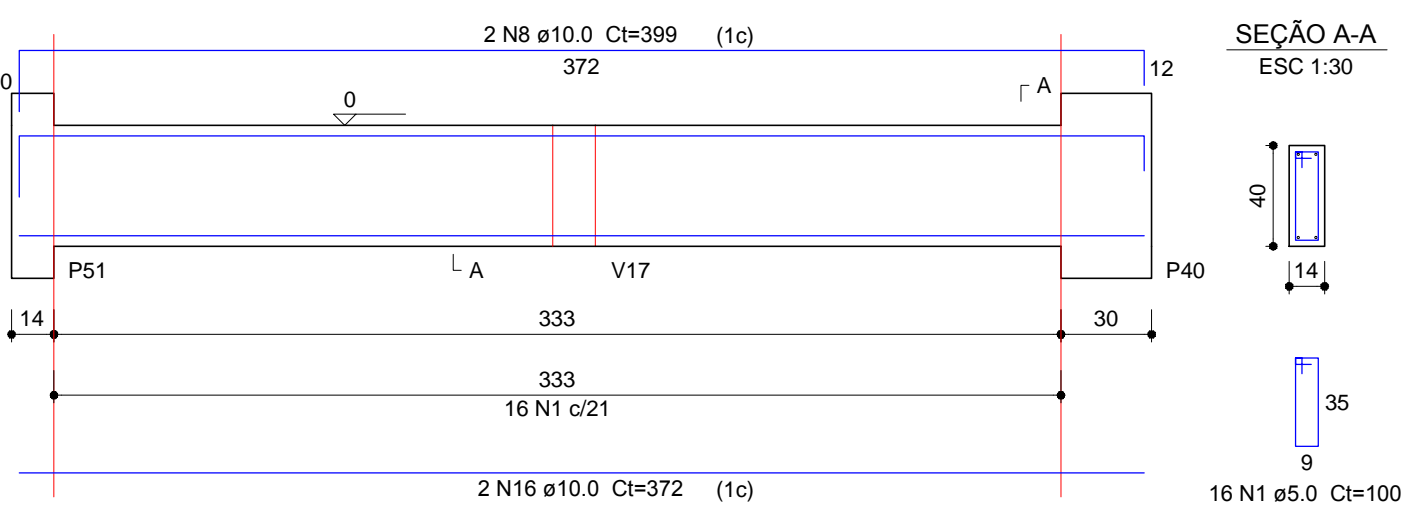
V45 (20 x 40)



V48 (14 x 40)



V51 (14 x 40)



Relação do aço					
AÇO	N	DIAM (mm)	QUANT	C.UNIT (cm)	C.TOTAL (cm)
V39	1	5.0	242	100	24200
V44	2	5.0	2	188	376
V47	3	5.0	39	112	4368
V50	4	5.0	3	80	240
V53	5	10.0	4	658	2632
	6	10.0	2	676	1352
	7	10.0	6	382	2292
	8	10.0	8	399	3192
	9	10.0	2	198	396
	10	10.0	2	668	1336
	11	10.0	2	407	814
	12	10.0	2	211	422
	13	10.0	2	227	454
	14	10.0	2	607	1214
	15	10.0	2	639	1278
	16	10.0	10	372	3720
	17	10.0	4	407	1628
	18	10.0	2	226	452
	19	10.0	2	261	522
	20	10.0	4	390	1560
	21	12.5	2	430	860
	22	12.5	2	754	1508
	23	12.5	5	104	520

Resumo do aço			
AÇO	DIAM (mm)	C.TOTAL (m)	PESO + 10 % (kg)
CA50	10.0	232.7	157.8
CA60	5.0	291.9	49.5
PESO TOTAL (kg)			
CA50	188.4		
CA60	49.5		